



ULM Warhawks Men's Basketball

University of Louisiana at Monroe



ULM (15-8, 9-3 SBC)
WARHAWKS

Vs.

Georgia Southern
EAGLES (16-4, 9-2 SBC)



Game 24

Saturday, Feb. 7, 2015 • 6:30 p.m. (CT)
Hanner Fieldhouse (4,358) • Statesboro, Ga.
Live Stream: GS All-Access (Online Only)
Radio: KLIP LA 105.3 FM, Nick White (PXP)
Twitter: @ULM_MBB

ULM Quick Notes

- ULM enters the contest having won five consecutive road games, the most since 1993-94
- The Warhawks are on a three-game winning streak including a 77-61 victory over UALR on Thursday. Senior Tylor Ongwae and junior Majok Deng each registered 21 points, while junior Jamaal Samuel aided the attack with 16 points. ULM shot .577 (30-52) from the field in the game
- ULM enters the contest 0.5 games out of first-place behind Georgia Southern and alone in second place in the Sun Belt Conference standings. The Warhawks are off to their best-ever start in SBC play
- ULM is 8-2 all-time against Georgia Southern including a 4-1 mark on the road. It's ULM's first trip to Georgia Southern since Jan. 23, 1981 when head coach Keith Richard was on the team. Richard never lost at Georgia Southern in four games
- The Warhawks have already surpassed their conference win total from last season by two games and have also surpassed their overall win total by five games when they finished 10-17 (7-11 SBC)
- ULM is the only team in the SBC that has not allowed 75 points in a single game this season. It is also one of nine teams left in the nation to accomplish that. The list also includes Cincinnati, New Mexico, George Washington, Oregon State, Saint Peters, Utah, Baylor and New Hampshire
- The Warhawks are 12-0 on the season when they have at least three double-figure scorers and 7-0 when they shoot over 50 percent from the field
- On the year, the Warhawks enter the game ranking first in the league in field goal percentage defense (.375), three-point percentage defense (.281) and blocks (4.6 bpg). The FG% defense and 3FG% defense are also both top-15 in the nation
- ULM wrapped up the month of January with an 8-2 record, its best January record since 2001-02

ULM MEN'S BASKETBALL SCHEDULE

Sat, Nov. 15	# at UAB	W, 74-65
Mon, Nov. 17	Champion Baptist	W, 106-39
Fri, Nov. 21	# at No. 8 Florida	L, 61-56 (OT)
Wed, Nov. 26	# vs. Coastal Carolina	L, 61-48
Thurs, Nov. 27	# vs. Robert Morris	L, 71-54
Sat, Dec. 6	Louisiana College	W, 83-55
Tues, Dec. 9	Northwestern State	W, 82-74
Sat, Dec. 13	at New Mexico	L, 54-46
Tues, Dec. 16	Central Baptist	W, 78-53
Fri, Dec. 19	LSU-Alexandria	W, 76-71
Sun, Dec. 21	at Samford	L, 64-50
Tues, Dec. 30	at Georgia State*	L, 65-45
Mon, Jan. 5	Arkansas State*	W, 70-61
Thurs, Jan. 8	at UT Arlington*	W, 76-73 (OT)
Sat, Jan. 10	at Texas State*	W, 62-59
Thurs, Jan. 15	Troy*	W, 63-54
Sat, Jan. 17	UALR*	W, 64-52
Mon, Jan. 19	at UL-Lafayette*	W, 57-55
Thurs, Jan. 22	UT Arlington*	L, 61-57
Sat, Jan. 24	Georgia Southern*	L, 57-53
Thurs, Jan. 29	at Troy*	W, 58-55 (OT)
Sat, Jan. 31	South Alabama*	W, 67-61
Thurs, Feb. 5	at UALR*	W, 77-61
Sat, Feb. 7	at Georgia Southern*	6:30 PM
Thurs, Feb. 12	UL-Lafayette*	7:00 PM
Sat, Feb. 14	Appalachian State*	2:00 PM
Sat, Feb. 21	at Arkansas State*	7:05 PM
Thurs, Feb. 26	at South Alabama*	7:05 PM
Sat, Feb. 28	at Appalachian State*	2:30 PM
Thurs, March 5	Georgia State*	7:00 PM
Sat, March 7	Texas State*	4:00 PM
Thurs, March 12	SBC Championships%	TBA

All times Central and subject to change. **Bold** indicates home game; *-Sun Belt game; %-SBC Tournament; #Battle 4 Atlantis

We are ULM. Please note that there are only two correct versions of our institution's name, the preferred acronym ULM and the full name, the University of Louisiana at Monroe. Any other reference, including Louisiana-Monroe, UL-Monroe, La.-Monroe, LAM, or simply Monroe, are incorrect.

Media Relations Contacts

Robbie Kleinmuntz (Primary)	Michael Garabedian
Assistant Director	Graduate Assistant
kleinmuntz@ulm.edu	garabemc@warhawks.ulm.edu
O: 318-342-5462	O: 318-342-5461
C: 847-912-5380	C: 305-926-8420



ULM Warhawks Men's Basketball

University of Louisiana at Monroe



Keith Richard
Head Coach

Fifth Year at ULM
14th Season Overall

Alma Mater: ULM (1982)

THE RICHARD FILE

COACHING HONORS

- 1999 Sun Belt Coach of the Year
- Has been part of the coaching staff for seven NCAA Tournament and three NIT teams

COACHING CAREER

Season	School	Position	Record
1984-85	ULM	Graduate Assistant	17-12
1985-86	ULM	Graduate Assistant	20-10/NCAA
1986-87	Marshall	Assistant Coach	25-6/NCAA
1987-88	Marshall	Assistant Coach	24-8/NIT
1988-89	Marshall	Assistant Coach	15-15
1989-90	ULM	Assistant Coach	22-8/NCAA
1990-91	ULM	Assistant Coach	25-8/NCAA
1991-92	ULM	Assistant Coach	19-10/NCAA
1992-93	ULM	Assistant Coach	26-5/NCAA
1993-94	ULM	Assistant Coach	19-9
1994-95	La. Tech	Assistant Coach	14-13
1995-96	La. Tech	Associate Head Coach	11-17
1996-97	La. Tech	Associate Head Coach	15-14
1997-98	La. Tech	Associate Head Coach	12-15
1998-99	La. Tech	Head Coach	19-9
1999-00	La. Tech	Head Coach	21-8
2000-01	La. Tech	Head Coach	17-12
2001-02	La. Tech	Head Coach	22-10/NIT
2002-03	La. Tech	Head Coach	12-15
2003-04	La. Tech	Head Coach	15-15
2004-05	La. Tech	Head Coach	14-15
2005-06	La. Tech	Head Coach	20-13/NIT
2006-07	La. Tech	Head Coach	10-20
2008-09	LSU	Assistant Coach	27-8/NCAA
2009-10	LSU	Assistant Coach	11-20
2010-11	ULM	Head Coach	7-24
2011-12	ULM	Head Coach	3-26
2012-13	ULM	Head Coach	4-23
2013-14	ULM	Head Coach	10-17
2014-15	ULM	Head Coach	15-8

PLAYING CAREER

- Played for ULM from 1978-82; Coached by Lenny Fant, Benny Hollis & Mike Vining
- 1979 Atlantic Sun Tournament Champions, NIT
- 1980 Atlantic Sun Regular Season Champions
- 1982 Atlantic Sun Tournament Champions, NCAA
- Two-time team captain ('81 & '82)
- Led team in assists twice

EDUCATION

- Bachelor's degree in general business, ULM (1982)
- Master's degree in guidance counseling, ULM (1986)

ULM Quick Notes Continued...

- Ongwae leads the team in both scoring and rebounding with 13.9 and 7.1 per outing, respectively. He leads the league in free throw percentage at .872 (82-94). Ongwae is coming off his eighth career 20-plus scoring game and the fourth this season. He was one rebound away from a double-double with nine

- Deng is coming off a career-high 21-point performance against UALR. He ranks second in the SBC in blocks (1.7 bpg). Deng averages a team-high 12.2 points per game in league games and is shooting .404 (19-47) from three-point range. Deng scores 10.1 points per game on the year

- Sophomore Nick Coppola ranks third in the league in assist:turnover ratio (2.2) and assists (3.9 apg). He has played at least 40 minutes seven times this year and 16 times in his career. Coppola played 40 minutes on Thursday at UALR and scored 11 points

- Junior Justin Roberson is coming off a strong performance at UALR where he dished out a career-high seven assists. He also scored eight points and grabbed five rebounds in 39 minutes. Roberson averages 8.6 points per game on the year

- The Warhawks are 9-2 at home on the season and 399-171 all-time in Fant-Ewing Coliseum. They will go for their 400th win in the Coliseum on Thursday against rival UL-Lafayette

- Twice this season the Warhawks erased a 13-point second half deficit to come back and win in overtime. They did it at UT Arlington and Troy. Keith Richard is 19-8 all-time in overtime in his head coaching career

- ULM shot up to the top of the standings after winning six straight conference games this season. It was the most consecutive SBC victories in school history. It was also the most league wins in-a-row since 1998-99 when it was a member of the Southland Conference

- Senior Marvin Williams played a huge role in beginning the six-game winning streak for ULM. After the first three victories, he was named Sun Belt Conference Player of the Week and Co-Louisiana Player of the Week on Jan. 12, 2015. Williams shot 26-33 (.798) and averaged 20.7 points over the 3-0 week. He posted a career-high 22 points against Red Wolves and then matched his scoring and rebounding highs with 22 and 13 against the Mavs, respectively

- Williams' Player of the Week honors came on a stretch of three games in five days where the Warhawks went undefeated

- In conference games only, senior Marvin Williams ranks first in the conference in field goal percentage (.617) and scores 10.9 points per game

- ULM has had five different players tally a double-double and eight different players reach double-figure scoring in a game this season

- Ongwae won Co-Louisiana Player of the Week on Dec. 22, 2014 and Sun Belt Conference Player of the Week on Nov. 18, 2014. He was named to the Preseason All-SBC Second-Team after earning four postseason awards in 2013-14

- The Warhawks have had two different players earn SBC Player of the Week honors in the same season for the first time in school history. ULM joined the league in 2005-06

- ULM closed out non-conference play with a winning record for the first time since 2007-08

- Earlier this season, ULM took eighth-ranked Florida to overtime. Coppola hit a three-pointer with 19 seconds left to level the score at 51. ULM led 54-53 with 3:00 remaining in overtime after a three-point play from Ongwae



ULM Warhawks Men's Basketball

University of Louisiana at Monroe



ULM Quick Notes Continued...

- The 61 points allowed versus No. 8 Florida was the lowest ULM has ever let up against a ranked opponent in program history
- ULM hung around in front of 13,710 fans at The Pit against New Mexico in a closely contested 54-46 decision. ULM went on an 11-0 run in the second half to make it a six-point game with 3:48 remaining
- The Warhawks posted a historic 106-39 victory over Champion Baptist in their home opener. The 67-point win broke the school record for largest margin of victory. It was also the most points ULM scored in a game since Feb. 17, 2001 in a game against UTSA. Additionally, the 67-point victory is the largest of any game in the Sun Belt Conference this season
- The Warhawks followed it up with a 28-point home win over Louisiana College as both Deng and Coppola recorded double-doubles
- ULM has had two players tally double-doubles in the same game twice this season, both at home (against La. College and Northwestern St.)
- Coppola dished out a career-high 12 assists against Louisiana College in a double-double. Coppola started all 27 games last year at point guard as a true freshman and has started every game of his career
- The Warhawks opened the season with a 74-65 victory on the road over UAB. It was the first opening night victory for ULM since Nov. 14, 2008 when it defeated Morehead State, 56-54 and the first opening night road win since Nov. 23, 1999 when it won at Samford, 67-60. Additionally, it was the largest opening night road victory since Dec. 1, 1979 when it beat Nicholls State, 79-69
- ULM has 15 home games on the 2014-15 schedule, the most since 1985-86
- Keith and Lance Richard have gone up against four other father/son duos this season. The Richard's took on Josiah/Eric Capaci at Champion Baptist, Billy/Billy Donovan at Florida, Cullen/Craig Neal at New Mexico and Ron/R.J. Hunter at Georgia State
- The Warhawks were tabbed for sixth in the Sun Belt Conference Preseason Poll. They return three starters and six players overall on a team that more-than doubled both its overall and conference win totals
- Last season, Williams notched a 19-point performance against No. 5 Kansas and outscored both Andrew Wiggins and Joel Embiid, the first and third picks of the NBA draft
- The Warhawks enter the 2014-15 season without any APR penalties for the first time in five years. ULM head coach Keith Richard has turned the program around academically since inheriting APR sanctions when he took over at the helm, and the Warhawks have won back-to-back Sun Belt Conference academic awards
- For the first time since the NCAA instituted academic progress rate (APR) scores in 2003-04, the ULM men's basketball program tallied a perfect 1,000 score in the 2013-14 season. Over the summer, ULM was the only Division I institution in the state of Louisiana to earn the Team Academic Excellence award from the NABC
- On Jan. 24, 2015, legendary former head coach Mike Vining was honored at halftime in the game against Georgia Southern with the raising of a "402" banner. It represents his total number of regular season and postseason victories at ULM over 24 seasons at the helm

HOME COURT ADVANTAGE

399-171 All-Time in Fant-Ewing Coliseum

ULM RECORDS IN FANT-EWING

Year	Games	Record	Pct.	Avg. Attend.
1971-72	10	6-4	.600	4,190
1972-73	11	8-3	.727	3,232
1973-74	11	8-3	.727	3,250
1974-75	12	11-1	.917	3,454
1975-76	13	10-3	.769	5,451
1976-77	13	9-4	.692	5,073
1977-78	13	10-3	.769	4,459
1978-79	16	15-1	.937	5,215
1979-80	14	10-4	.714	3,678
1980-81	16	8-8	.500	3,067
1981-82	16	13-3	.812	3,808
1982-83	14	12-2	.857	2,946
1983-84	16	11-5	.688	2,098
1984-85	13	9-4	.692	2,380
1985-86	15	14-1	.933	2,114
1986-87	13	8-5	.615	2,582
1987-88	12	10-2	.833	2,582
1988-89	12	8-4	.667	2,861
1989-90	14	13-1	.928	2,949
1990-91	14	14-0	1.000	3,327
1991-92	12	9-3	.750	2,710
1992-93	14	14-0	1.000	3,892
1993-94	14	10-4	.714	3,351
1994-95	12	9-3	.750	3,619
1995-96	11	8-3	.727	2,182
1996-97	12	9-3	.750	1,822
1997-98	11	7-4	.636	1,301
1998-99	11	7-4	.636	1,913
1999-00	14	11-3	.786	2,003
2000-01	13	9-4	.692	935
2001-02	12	12-0	1.000	3,437
2002-03	12	7-5	.583	1,412
2003-04	13	9-4	.692	1,624
2004-05	13	6-7	.462	1,296
2005-06	13	8-5	.615	793
2006-07	14	14-0	1.000	1,952
2007-08	12	5-7	.417	1,338
2008-09	14	8-6	.571	907
2009-10	14	8-6	.571	1,398
2010-11	13	4-9	.308	1,400
2011-12	13	0-13	.000	1,438
2012-13	12	3-9	.250	1,255
2013-14	12	6-6	.500	1,513
2014-15	11	9-2	.818	1,519
TOTALS	570	399-171	.700	



ULM Warhawks Men's Basketball

University of Louisiana at Monroe



WE ARE ULM

12 REGULAR SEASON CHAMPIONSHIPS

1961-62 - Gulf States Conference
 1964-65 - Gulf States Conference
 1978-79 - Atlantic Sun Conference
 1979-80 - Atlantic Sun Conference
 1985-86 - Southland Conference
 1989-90 - Southland Conference
 1990-91 - Southland Conference
 1992-93 - Southland Conference
 1993-94 - Southland Conference
 1995-96 - Southland Conference
 1996-97 - Southland Conference
 2006-07 - Sun Belt Conference West Division

NINE POST-SEASON APPEARANCES

1978-79 - NIT
 1981-82 - NCAA Tournament
 1985-86 - NCAA Tournament
 1987-88 - NIT
 1989-90 - NCAA Tournament
 1990-91 - NCAA Tournament
 1991-92 - NCAA Tournament
 1992-93 - NCAA Tournament
 1995-96 - NCAA Tournament

EIGHT TOURNAMENT CHAMPIONSHIPS

1978-79 - Atlantic Sun Conference
 1981-82 - Atlantic Sun Conference
 1985-86 - Southland Conference
 1989-90 - Southland Conference
 1990-91 - Southland Conference
 1991-92 - Southland Conference
 1992-93 - Southland Conference
 1995-96 - Southland Conference

Numerical Roster

No.	Player	Pos.	Ht.	Wt.	Cl.	Hometown (Previous School)
0	Williams, Marvin	C	6-8	245	Sr.	Memphis, Tenn. (NW Florida State College)
1	Brown, Alex	G	6-4	185	Fr.	Vernon, Fla. (Vernon HS)
2	Harvey, DeMondre	F	6-7	210	Jr.	Minden, La. (Pearl River CC)
3	Cooper, Prince	G	6-4	215	So.	Freeport, Bahamas (Miami-Dade College)
4	Foster, Mack	G	6-2	185	Jr.	Beulah, Miss. (East Mississippi CC)
5	Samuel, Jamaal	F	6-9	205	Jr.	New Orleans, La. (Illinois State)
10	Taylor, Roderick	F	6-8	210	Fr.	Harker Heights, Texas (Harker Heights HS)
11	Coppola, Nick	G	5-11	190	So.	Richmond, Va. (Benedictine Prep)
12	Ongwae, Tylor	F	6-7	205	Sr.	Eldoret, Kenya (Ranger College)
13	Deng, Majok	F	6-10	190	Jr.	Adelaide, Australia (Indian Hills CC)
20	Amajoyi, Chinedu	G	6-3	195	Sr.	Rancho Cucamonga, Calif. (Kilgore College)
22	Richard, Lance	G	5-10	175	RFr.	Monroe, La. (Sterlington HS)
32	Roberson, Justin	G	6-1	185	Jr.	Natchitoches, La. (Western Texas)

COACHING STAFF

Head Coach: Keith Richard (ULM '82)
 Assistant Coach: Ryan Cross (Buffalo '95)
 Assistant Coach: Lonnie Cooper (Louisiana Tech '99)

Assistant Coach: J.A. Anglin (LSU Shreveport '10)
 Graduate Assistant: Luke Richard
 Team Manager: Gil Williams

PRONUNCIATION

Keith/Lance/Luke RICHARD Ree-SHARD
 CHINEDU AMAJOYI Chin-ih-due Om-uh-joy
 TYLOR ONGWAE Tie-ler Ong-why
 MAJOK Deng Muh-jook
 Justin ROBERSON Rob-er-sin
 Nick COPPOLA Cuh-pole-uh



BY CLASS

Seniors (3)..... Chinedu Amajoyi
 Tylor Ongwae
 Marvin Williams
 Juniors (5) Majok Deng
 Mack Foster
 DeMondre Harvey
 Justin Roberson
 Jamaal Samuel
 Sophomores (2) Prince Cooper
 Nick Coppola
 Freshmen (3)..... Alex Brown
 Lance Richard
 Roderick Taylor

BY POSITION

Guards (7) Chinedu Amajoyi
 Alex Brown
 Prince Cooper
 Nick Coppola
 Mack Foster
 Lance Richard
 Justin Roberson
 Forwards (5)..... Majok Deng
 DeMondre Harvey
 Tylor Ongwae
 Jamaal Samuel
 Roderick Taylor
 Center (1) Marvin Williams

BY STATE/COUNTRY

Australia..... Majok Deng
 Bahamas Prince Cooper
 California..... Chinedu Amajoyi
 Florida..... Alex Brown
 Kenya Tylor Ongwae
 Louisiana (4) DeMondre Harvey
 Lance Richard
 Justin Roberson
 Jamaal Samuel
 Mississippi..... Mack Foster
 Tennessee Marvin Williams
 Texas Roderick Taylor
 Virginia Nick Coppola



ULM Warhawks Men's Basketball

University of Louisiana at Monroe



ULM Quick Facts

Location _____ Monroe, La.
 Enrollment _____ 8,527
 Founded _____ 1931
 Nickname/Mascot _____ Warhawks/Ace
 Colors _____ Maroon & Gold
 President _____ Dr. Nick Bruno
 Director of Athletics _____ Brian Wickstrom
 Conference _____ Sun Belt
 Affiliation _____ NCAA Division I
 All-Time Record _____ 925-822 (63rd season)
 Winning Seasons _____ 38 (20+ wins 10 times)
 Home Venue _____ Fant-Ewing Coliseum (7000)
 Playing Surface _____ Maple
 Opened _____ 1971
 Press Row Phone _____ 318-342-6920

Head Coach _____ Keith Richard
 Record at ULM _____ 39-98 (fifth year)
 Career Record _____ 189-215 (14th year)
 Assistant Coach _____ Ryan Cross
 Assistant Coach _____ Lonnie Cooper
 Assistant Coach _____ J.A. Anglin
 Graduate Assistant _____ Luke Richard
 Team Manager _____ Gil Williams
 Athletic Trainer _____ Jeremy Teblum

Website _____ www.ulmwarhawks.com
 Facebook _____ www.facebook.com/warhawks
 Twitter _____ @ULM_MBB

Scouting Georgia Southern

The first-place Eagles come into Saturday with a 16-4 overall record and 9-2 in Sun Belt Conference play. They are a perfect 10-0 at home and 5-0 in SBC games. GS is coming off a big 58-54 victory over rival Georgia State. It will be the Eagles second game in a row where they will have to defend the top spot in the league against a second-place team.

Jelani Hewitt leads the squad with 19.2 points per game. He is shooting .380 (65-171) from beyond-the-arc and .854 (111-130) from the free throw line. Trent Wiedeman also pitches in down-low with 11.9 points and 6.2 rebounds per outing.

In the first meeting between the two teams on Jan. 24, the Eagles edged the Warhawks, 57-53. Eric Ferguson notched a game-high 19 points while Hewitt had 15. ULM senior Tylor Ongwae paced the Warhawks with a double-double, 17 points and 10 rebounds, and sophomore Nick Coppola netted 10 points. The Warhawks were plagued by a cold shooting night which included a 2-19 mark from long-range.

Mark Byington is in his second year as head coach. In his first season, the final season for the Eagles in the Southern Conference, Georgia Southern made its first semifinal appearance in the conference tournament since 2004-05.

Byington previously spent nine seasons as an assistant coach at the College of Charleston. CofC posted an overall record of 194-100 and a 108-51 mark in the SoCon during Byington's time there, including six 20-win seasons and three regular season titles.

All-Time Series History vs. Georgia Southern

ULM leads, 8-2

At ULM: ULM leads, 4-1

At GS: ULM leads, 4-1

On Neutral Courts: Tied, 0-0

ULM's Record by Starting Lineup

Coppola-Foster-Ongwae-Deng-Williams (6-2, 6-2 SBC)
 Coppola-Roberson-Ongwae-Deng-Williams (4-4, 2-0 SBC)
 Coppola-Roberson-Ongwae-Deng-Harvey (3-1, 0-0 SBC)
 Coppola-Roberson-Ongwae-Samuel-Deng (2-0, 1-0 SBC)
 Coppola-Amajoyi-Ongwae-Samuel-Harvey (0-1, 0-1 SBC)

Where ULM Ranks Nationally...

12th in 3FG% defense (.281)
 13th in FG% defense (.375)
 39th in total blocks (100)
 39th in scoring defense (60.1 ppg)
 40th in defensive rebs (26.2 drpg)

2014-15 SBC Preseason

Poll (First-place votes in parenthesis)

- Georgia State 121 (11)
- UL-Lafayette 110
- UALR 94
- UT Arlington 75
- Arkansas State 73
- ULM 69**
- Texas State 43
- Troy 42
- Georgia Southern 38
- South Alabama 38
- Appalachian State 23

SUN BELT CONFERENCE PRESEASON TEAMS

Preseason First Team All-Conference

Jelani Hewitt (Georgia Southern, Senior, Guard)
 Ryan Harrow (Georgia State, Senior, Guard)
 R.J. Hunter (Georgia State, Junior, Guard)
 Shawn Long (UL Lafayette, Senior, Forward)
 Lonnie McClanahan (UT Arlington, Senior, Guard)

Preseason Second Team All-Conference

Josh Hagins (UALR, Junior, Guard)
 James White (UALR, Junior, Forward)
 Xavian Rimmer (UL Lafayette, Senior, Guard)
Tylor Ongwae (ULM, Senior, Forward)
 Emani Grant (Texas State, Junior, Forward)

Preseason Third Team All-Conference

Tab Hamilton (Appalachian State, Senior, Guard)
 Trent Wiedeman (Georgia Southern, Senior, Guard)
 Curtis Washington (Georgia State, Senior, Forward)
 Jamel Outler (UT Arlington, Senior, Guard)
 Kevin Thomas (Troy, Senior, Forward)

Preseason Player of the Year

R.J. Hunter (Georgia State, Junior, Guard)



SUN BELT
CONFERENCE



ULM Warhawks Men's Basketball

University of Louisiana at Monroe



2014-15 ULM MEN'S BASKETBALL

ULM Combined Team Statistics (as of Feb 05, 2015)

All games

Overall Stats

RECORD:	OVERALL	HOME	AWAY	NEUTRAL
ALL GAMES	15-8	9-2	6-4	0-2
CONFERENCE	9-3	4-2	5-1	0-0
NON-CONFERENCE	6-5	5-0	1-3	0-2

#	Player	gp-gs	min	avg	Total		3-Point		F-Throw		Rebounds				pf	dq	a	to	blk	stl	pts	avg
					fg-fga	fg%	3fg-fga	3fg%	ft-fa	ft%	off	def	tot	avg								
12	Ongwae, Tylor	23-23	773	33.6	115-269	.428	7-38	.184	82-94	.872	59	105	164	7.1	52	2	64	50	9	20	319	13.9
13	Deng, Majok	23-22	644	28.0	81-171	.474	26-74	.351	44-59	.746	40	117	157	6.8	49	1	27	30	38	12	232	10.1
11	Coppola, Nick	23-23	805	35.0	74-181	.409	30-87	.345	29-42	.690	4	57	61	2.7	45	1	90	41	0	24	207	9.0
32	Roberson, Justin	23-14	615	26.7	78-192	.406	5-31	.161	37-51	.725	12	75	87	3.8	59	5	58	41	6	26	198	8.6
00	Williams, Marvin	21-16	474	22.6	73-129	.566	1-3	.333	32-51	.627	36	62	98	4.7	49	1	10	35	19	9	179	8.5
05	Samuel, Jamaal	23-3	386	16.8	57-144	.396	18-66	.273	10-16	.625	14	61	75	3.3	38	1	8	24	20	10	142	6.2
04	Foster, Mack	23-8	422	18.3	44-114	.386	15-56	.268	10-19	.526	10	32	42	1.8	37	1	26	16	4	15	113	4.9
02	Harvey, DeMondre	23-5	298	13.0	27-49	.551	0-0	.000	13-23	.565	28	39	67	2.9	22	0	9	12	8	4	67	2.9
22	Richard, Lance	15-0	50	3.3	7-25	.280	6-23	.261	0-0	.000	1	5	6	0.4	4	0	0	2	1	2	20	1.3
03	Cooper, Prince	15-0	112	7.5	7-16	.438	0-0	.000	1-8	.125	6	13	19	1.3	5	0	9	8	1	2	15	1.0
20	Amajoyi, Chinedu	14-1	96	6.9	4-17	.235	0-7	.000	2-2	1.000	1	7	8	0.6	7	0	12	7	0	1	10	0.7
Team											36	32	68					4				
Total.....		23	4675		567-1307	.434	108-385	.281	260-365	.712	247	605	852	37.0	367	12	313	270	106	125	1502	65.3
Opponents.....		23	4679		488-1301	.375	123-437	.281	283-387	.731	248	544	792	34.4	342	-	255	272	78	125	1382	60.1

TEAM STATISTICS	ULM	OPP	Date	Opponent	Score	Att.
SCORING	1502	1382	11/15/14	at UAB	W 74-65	2403
Points per game	65.3	60.1	11/17/14	CHAMPION BAPTIST	W 106-39	1078
Scoring margin	+5.2	-	11/21/14	at Florida	Lot 56-61	11003
FIELD GOALS-ATT	567-1307	488-1301	11/26/14	vs Coastal Carolina	L 48-61	2426
Field goal pct	.434	.375	11/27/14	vs Robert Morris	L 54-71	2136
3 POINT FG-ATT	108-385	123-437	12/6/14	LOUISIANA COLLEGE	W 83-55	1053
3-point FG pct	.281	.281	12/09/14	NORTHWESTERN STATE	W 82-74	1082
3-pt FG made per game	4.7	5.3	12/13/14	at New Mexico	L 46-54	13710
FREE THROWS-ATT	260-365	283-387	12/16/14	CENTRAL BAPTIST	W 78-53	1060
Free throw pct	.712	.731	12/19/14	LSUA	W 76-71	1201
F-Throws made per game	11.3	12.3	12/21/14	at Samford	L 50-64	1053
REBOUNDS	852	792	* 12/30/14	at Georgia State	L 45-65	1371
Rebounds per game	37.0	34.4	* 01/05/15	ARKANSAS STATE	W 70-61	1418
Rebounding margin	+2.6	-	* 1/8/15	at UTA	Wot 76-73	1074
ASSISTS	313	255	* 1/10/15	at Texas State	W 62-59	1612
Assists per game	13.6	11.1	* 01/15/15	TROY	W 63-54	1676
TURNOVERS	270	272	* 01/17/15	UALR	W 64-52	1793
Turnovers per game	11.7	11.8	* 1/19/15	at UL-Lafayette	W 57-55	4213
Turnover margin	+0.1	-	* 01/22/15	UTA	L 57-61	1571
Assist/turnover ratio	1.2	0.9	* 01/24/15	GEORGIA SOUTHERN	L 53-57	2898
STEALS	125	125	* 01/29/15	at TROY	Wot 58-55	2289
Steals per game	5.4	5.4	* 01/31/15	SOUTH ALABAMA	W 67-61	1878
BLOCKS	106	78	* 2/5/15	at UALR	W 77-61	1676
Blocks per game	4.6	3.4				
ATTENDANCE	16708	44966				
Home games-Avg/Game	11-1519	10-4040				
Neutral site-Avg/Game	-	2-2281				

On the Season in the SBC, ULM Ranks...

First in FG% defense: .375	Second in ast:turn ratio: 1.2	Ongwae first in FT%: .872
First in 3FG% defense: .281	Third in assists: 13.6 apg	Deng second in blocks: 1.7 bpg
First in blocks: 4.6 bpg	Third in reb. margin: +2.7	Williams third in FG%: .566
Second in FT%: .712	Third in scoring def.: 60.1 ppg	Coppola third in asts: 3.9 apg
Second in def. rebs: 26.3 drpg	Third in FG%: .434	Coppola third in ast:turn: 2.2
Second in def. reb%: .708		Deng third in def rebs: 5.1 drpg

Score by Periods	1st	2nd	OT	Totals
ULM	697	783	22	1502
Opponents	607	754	21	1382



ULM Warhawks Men's Basketball

University of Louisiana at Monroe



2014-15 ULM MEN'S BASKETBALL

ULM Combined Team Statistics (as of Feb 05, 2015)

Conference games

Conference Stats

RECORD:	OVERALL	HOME	AWAY	NEUTRAL
ALL GAMES	9-3	4-2	5-1	0-0
CONFERENCE	9-3	4-2	5-1	0-0
NON-CONFERENCE	0-0	0-0	0-0	0-0

#	Player	gp-gs	min	avg	Total		3-Point		F-Throw		Rebounds											
					fg-fga	fg%	3fg-fga	3fg%	ft-fa	ft%	off	def	tot	avg	pf	dq	a	to	blk	stl	pts	avg
13	Deng, Majok	12-11	358	29.8	51-97	.526	19-47	.404	25-34	.735	24	57	81	6.8	29	1	16	18	17	5	146	12.2
12	Ongwae, Tylor	12-12	414	34.5	48-133	.361	4-25	.160	44-49	.898	29	62	91	7.6	24	1	31	25	5	13	144	12.0
00	Williams, Marvin	11-10	296	26.9	50-81	.617	0-0	.000	20-29	.690	23	42	65	5.9	25	1	7	24	9	5	120	10.9
32	Roberson, Justin	12-3	310	25.8	34-101	.337	2-19	.105	22-31	.710	8	35	43	3.6	32	3	29	16	4	11	92	7.7
11	Coppola, Nick	12-12	434	36.2	33-90	.367	11-43	.256	13-19	.684	1	36	37	3.1	22	0	41	23	0	13	90	7.5
04	Foster, Mack	12-8	262	21.8	24-68	.353	9-38	.237	8-13	.615	4	25	29	2.4	20	1	11	11	1	5	65	5.4
05	Samuel, Jamaal	12-2	171	14.3	27-69	.391	7-29	.241	0-1	.000	5	25	30	2.5	15	1	3	9	6	2	61	5.1
02	Harvey, DeMondre	12-1	108	9.0	5-13	.385	0-0	.000	5-10	.500	8	11	19	1.6	10	0	5	3	1	2	15	1.3
22	Richard, Lance	5-0	16	3.2	2-7	.286	2-6	.333	0-0	.000	1	2	3	0.6	1	0	0	1	0	0	6	1.2
03	Cooper, Prince	8-0	49	6.1	4-5	.800	0-0	.000	0-4	.000	1	5	6	0.8	4	0	4	4	0	1	8	1.0
20	Amajoyi, Chinedu	6-1	32	5.3	0-2	.000	0-2	.000	2-2	1.000	0	0	0	0.0	0	0	3	1	0	1	2	0.3
Team											15	15	30									
Total.....		12	2450		278-666	.417	54-209	.258	139-192	.724	119	315	434	36.2	182	8	150	135	43	58	749	62.4
Opponents.....		12	2452		250-655	.382	63-224	.281	151-206	.733	107	297	404	33.7	174	-	129	131	37	62	714	59.5

TEAM STATISTICS	ULM	OPP	Date	Opponent	Score	Att.
SCORING	749	714	* 12/30/14	at Georgia State	L 45-65	1371
Points per game	62.4	59.5	* 01/05/15	ARKANSAS STATE	W 70-61	1418
Scoring margin	+2.9	-	* 1/8/15	at UTA	Wot 76-73	1074
FIELD GOALS-ATT	278-666	250-655	* 1/10/15	at Texas State	W 62-59	1612
Field goal pct	.417	.382	* 01/15/15	TROY	W 63-54	1676
3 POINT FG-ATT	54-209	63-224	* 01/17/15	UALR	W 64-52	1793
3-point FG pct	.258	.281	* 1/19/15	at UL-Lafayette	W 57-55	4213
3-pt FG made per game	4.5	5.3	* 01/22/15	UTA	L 57-61	1571
FREE THROWS-ATT	139-192	151-206	* 01/24/15	GEORGIA SOUTHERN	L 53-57	2898
Free throw pct	.724	.733	* 01/29/15	at TROY	Wot 58-55	2289
F-Throws made per game	11.6	12.6	* 01/31/15	SOUTH ALABAMA	W 67-61	1878
REBOUNDS	434	404	* 2/5/15	at UALR	W 77-61	1676
Rebounds per game	36.2	33.7				
Rebounding margin	+2.5	-				
ASSISTS	150	129				
Assists per game	12.5	10.8				
TURNOVERS	135	131				
Turnovers per game	11.3	10.9				
Turnover margin	-0.3	-				
Assist/turnover ratio	1.1	1.0				
STEALS	58	62				
Steals per game	4.8	5.2				
BLOCKS	43	37				
Blocks per game	3.6	3.1				
ATTENDANCE	11234	12235				
Home games-Avg/Game	6-1872	6-2039				
Neutral site-Avg/Game	-	0-0				

On the Season in the SBC, ULM Ranks...

First in def. reb%: .744	Third in FG% def: .382	Ongwae first in FT%: .898
First in def. rebs: 26.3 drpg	Third in 3FG% def: .281	Williams first in FG%: .617
Second in scoring def: 59.5 ppg	Third in blocks: 3.7 bpg	Deng third in 3FG%: .404
	Third in reb. margin: +2.5	Ongwae third in rebs: 7.6 rpg
		Deng third in blocks: 1.4 bpg
		Ongwae third in off rebs: 2.4
		Coppola third in min: 36.2 mpg

Score by Periods	1st	2nd	OT	Totals
ULM	337	395	17	749
Opponents	309	394	11	714



ULM Warhawks Men's Basketball

University of Louisiana at Monroe



ULM - TEAM GAME HIGHS

POINTS	106	CHAMPION BAPTIST (11/17/14)
	83	LOUISIANA COLLEGE (12/6/14)
	82	NORTHWESTERN STATE (12/09/14)
	78	CENTRAL BAPTIST (12/16/14)
	77	at UALR (2/5/15)
FIELD GOALS MADE	41	CHAMPION BAPTIST (11/17/14)
	35	LOUISIANA COLLEGE (12/6/14)
FIELD GOAL ATTEMPTS	70	at UTA (1/8/15)
	69	CHAMPION BAPTIST (11/17/14)
FIELD GOAL PERCENTAGE	.594 (41-69)	CHAMPION BAPTIST (11/17/14)
	.577 (30-52)	at UALR (2/5/15)
3 PT FIELD GOALS MADE	9	at UTA (1/8/15)
	9	at Florida (11/21/14)
	9	CHAMPION BAPTIST (11/17/14)
3 PT FG ATTEMPTS	31	at UTA (1/8/15)
	26	at TROY (01/29/15)
3 PT FG PERCENTAGE	.600 (6-10)	at Samford (12/21/14)
	.375 (9-24)	CHAMPION BAPTIST (11/17/14)
	.375 (6-16)	at UAB (11/15/14)
	.375 (3-8)	NORTHWESTERN STATE (12/09/14)
FREE THROWS MADE	19	UALR (01/17/15)
	17	LSUA (12/19/14)
	17	NORTHWESTERN STATE (12/09/14)
FREE THROW ATTEMPTS	30	UALR (01/17/15)
	24	CHAMPION BAPTIST (11/17/14)
FREE THROW PERCENTAGE	.938 (15-16)	SOUTH ALABAMA (01/31/15)
	.923 (12-13)	at UALR (2/5/15)
REBOUNDS	48	CHAMPION BAPTIST (11/17/14)
	47	at UTA (1/8/15)
	47	NORTHWESTERN STATE (12/09/14)
ASSISTS	21	LOUISIANA COLLEGE (12/6/14)
	21	CHAMPION BAPTIST (11/17/14)
STEALS	14	CHAMPION BAPTIST (11/17/14)
	12	LOUISIANA COLLEGE (12/6/14)
BLOCKED SHOTS	10	CHAMPION BAPTIST (11/17/14)
	8	NORTHWESTERN STATE (12/09/14)
TURNOVERS	20	LOUISIANA COLLEGE (12/6/14)
	18	at Texas State (1/10/15)
FOULS	24	at UTA (1/8/15)
	24	at Florida (11/21/14)

ULM Career Double-Doubles

Tylor Ongwae (7)

27 pts, 11 rebs vs. UL-L (1/4/14)
 27 pts, 10 rebs vs. Ga. State (1/25/14)
 16 pts, 11 rebs at UL-L (2/1/14)
 19 pts, 10 rebs vs. NSU (12/9/14)*
 15 pts, 10 rebs vs. Troy (1/15/15)*
 17 pts, 10 rebs vs. Ga. So. (1/14/15)*
 16 pts, 13 rebs vs. USA (1/31/15)*

Majok Deng (4)

14 pts, 10 rebs vs. C. Car (11/26/14)*
 14 pts, 11 rebs vs. La. Col (12/6/14)*
 11 pts, 11 rebs vs. Cen Bap (12/16/14)*
 14 pts, 15 rebs vs. UALR (1/17/15)*

Marvin Williams (3)

13 pts, 11 rebs at NSU (11/21/13)
 11 pts, 13 rebs at ASU (3/6/14)
 22 pts, 13 rebs at UTA (1/8/15)*

Nick Coppola (1)

12 pts, 12 asts vs. La. Col (12/6/14)*

DeMondre Harvey (1)

12 pts, 10 rebs, vs. NSU (12/9/14)*

* indicates this season



ULM Warhawks Men's Basketball

University of Louisiana at Monroe



SUN BELT CONFERENCE STANDINGS

As of 2/7/15

School	SBC	Pct.	Overall	Pct.	Streak
1. Georgia Southern	9-2	.818	16-4	.800	W5
2. ULM	9-3	.750	15-8	.652	W3
3. Georgia State	8-4	.667	15-8	.652	L1
4. UL-Lafayette	7-5	.583	13-10	.565	W2
5. UT Arlington	6-5	.545	12-9	.571	L2
6. Appalachian State	5-6	.455	8-12	.400	L2
T-7. South Alabama	5-7	.417	8-15	.348	L2
T-7. Texas State	5-7	.417	11-10	.524	W1
9.. Troy	4-8	.333	9-12	.429	W2
10. Arkansas State	4-9	.308	9-13	.409	L3
11. UALR	3-9	.250	8-14	.364	L2

Thursday's Results

Texas State 63, South Alabama 43
 Georgia Southern 58, Georgia St. 54
 UL-Lafayette 81, App. St. 66
 ULM 77, UALR 61
 Troy 69, Arkansas State 64

Saturday's Games

UT Arlington at UL-Lafayette, 1:00 PM
 Troy at Appalachian State, 2:30 PM
 Georgia St. at S. Alabama, 4:05 PM
 Texas State at UALR, 5:00 PM
 ULM at Georgia Southern, 6:30 PM

Name	Career 10+ Points	Career 10+ Rebs	Career 10+ Asts
Tylor Ongwae	39 times (20+ 13 times)	7 times	
Nick Coppola	20 times		1 time
Marvin Williams	17 times (20+ 2 times)	3 times	
Jamaal Samuel	5 times		
Chinedu Amajoyi	3 times		
DeMondre Harvey	2 times	1 time	
Name	Season 10+ Points	Season 10+ Rebs	Season 10+ Asts
Tylor Ongwae	15 times (20+ 4 times)	4 times	
Majok Deng	14 times (20+ 1 time)	4 times	
Nick Coppola	11 times		1 time
Justin Roberson	8 times		
Marvin Williams	7 times (20+ 2 times)	1 time	
Jamaal Samuel	4 times		
Mack Foster	3 times		
DeMondre Harvey	1 time	1 time	

Single-Game Categorical Highs 2014-15

Points	Tylor Ongwae - 25, two times, vs. CEBC/LSUA
Field Goals Made	Tylor Ongwae - 10, vs. Central Baptist
3FG Made	3, 10 times
Free Throws Made	Tylor Ongwae - 10, vs. South Alabama
Rebounds	Majok Deng - 15, vs. UALR
Assists	Nick Coppola - 12, vs. Louisiana College
Steals	Mack Foster/Justin Roberson - 4, vs LC/at TXST
Blocks	Majok Deng/Jamaal Samuel - 4, at UAB/vs. C. Car.
Minutes	Nick Coppola - 45, at No. 8 Florida

Number of times in 2014-15 a ULM student-athlete has led the team in...

Player	Points	Rebs	Assists	FGM	FGA	FTM	FTA	3FGM	3FGA	Blocks	Steals	Mins
Tylor Ongwae	9	11	6	11	17	10	9	3	1	3	7	9
Marvin Williams	5	5		5	3	5	7			7	3	
Majok Deng	5	9	3	4	3	4	5	11	7	14	4	1
Nick Coppola	3		12	3	1	1	1	11	11		8	12
Jamaal Samuel	2	2		2	3			4	5	4	4	
Justin Roberson	1	2	7	2	1	4	5			3	8	2
Mack Foster	1		2	1			1	5	2	2	4	1
DeMondre Harvey		2	1							1	3	
Lance Richard								1	2			
Chinedu Amajoyi			1									
Prince Cooper												1

Note: If multiple student-athletes tie in a category in a single game, they all receive credit for leading the team



ULM Warhawks Men's Basketball

University of Louisiana at Monroe



In ULM's Last Outing...

Warhawks Fly Above Trojans, 77-61

LITTLE ROCK, Ark. — The offense was clicking on all cylinders for the ULM men's basketball program Thursday night as it posted a decisive 77-61 victory over UALR at the Jack Stephens Center.

The Warhawks (15-8, 9-3 SBC) shot 57.7 percent from the field, their highest in conference play this year, including 62.1 percent in the first half. On the other side of the court, they held the Trojans (8-14, 3-9 SBC) to 33.9 percent shooting and 19.0 percent from long range.

Senior Tylor Ongwae and junior Majok Deng each poured in game-highs of 21 points. Deng's was a career-high as he went 7-for-10 from the field, while Ongwae's was the most he netted in conference play this season on 8-for-13 shooting. Deng also pulled down nine rebounds while Ongwae grabbed six.

Junior Jamaal Samuel also had a big night as he drained 16 points on 8-for-13 shooting. Ongwae, Deng and Samuel had all reached double-figures by halftime.

Sophomore Nick Coppola was the fourth Warhawk in double-figures with 11 points to go along with his four assists in 40 minutes. Junior Justin Roberson pitched in with eight points and a career-high seven assists.

For UALR, Maurius Hill led the way with 20 points and nine rebounds. Josh Hagins and Ben Dillard scored 10 points apiece.

Official Basketball Box Score -- Game Totals -- Final Statistics ULM vs UALR 2/5/15 7:53 p.m. at Little Rock, Ark. (Jack Stephens Center)

ULM 77 • 15-8, 9-3 SBC

#	Player	Total		3-Ptr	Rebounds			PF	TP	A	TO	Blk	Stl	Min
		FG-FGA	FG-FGA	FT-FTA	Off	Def	Tot							
05	Samuel, Jamaal	* 8-13	0-1	0-0	1	5	6	5	16	0	1	1	1	33
11	Coppola, Nick	* 3-6	1-1	4-4	1	2	3	3	11	4	3	0	1	40
12	Ongwae, Tylor	* 8-13	2-5	3-3	1	5	6	1	21	4	5	0	4	36
13	Deng, Majok	* 7-10	2-4	5-6	3	6	9	5	21	1	0	0	0	29
32	Roberson, Justin	* 4-10	0-3	0-0	0	5	5	3	8	7	2	1	0	39
02	Harvey, DeMondre	0-0	0-0	0-0	0	0	0	0	0	0	0	0	0	4
03	Cooper, Prince	0-0	0-0	0-0	0	0	0	0	0	0	0	0	0	1
04	Foster, Mack	0-0	0-0	0-0	0	3	3	2	0	0	2	0	0	16
20	Amajoyi, Chinedu	0-0	0-0	0-0	0	0	0	0	0	0	0	0	0	1
22	Richard, Lance	0-0	0-0	0-0	0	0	0	0	0	0	0	0	0	1
Team					1	3	4							
Totals		30-52	5-14	12-13	7	29	36	19	77	16	13	2	6	200
FG % 1st Half: 18-29 62.1%		2nd half: 12-23 52.2%		Game: 30-52 57.7%		Deadball Rebounds 0								
3FG % 1st Half: 1-5 20.0%		2nd half: 4-9 44.4%		Game: 5-14 35.7%										
FT % 1st Half: 0-0 0.0%		2nd half: 12-13 92.3%		Game: 12-13 92.3%										

UALR 61 • 8-14, 3-9 SBC

#	Player	Total		3-Ptr	Rebounds			PF	TP	A	TO	Blk	Stl	Min	
		FG-FGA	FG-FGA		FT-FTA	Off	Def								Tot
00	Woods, Roger	f	1-4	1-2	2-2	1	0	1	2	5	0	0	0	14	
55	Leeper, Gus	f	3-7	0-0	0-0	2	2	4	1	6	0	0	0	17	
03	Hagins, Josh	g	3-9	1-4	3-3	1	1	2	1	10	0	1	0	20	
11	Smith, DeVonte	g	0-0	0-0	0-0	0	1	1	0	0	0	1	0	19	
24	Dillard, Ben	g	2-8	0-5	6-8	1	1	2	0	10	2	3	0	1	28
01	Brown, Andre		0-2	0-0	0-0	3	0	3	2	0	0	1	0	0	10
02	Washington, Jerron		0-1	0-0	0-0	0	1	1	1	0	0	0	1	0	13
10	Hill, Maurius		8-14	1-2	3-5	4	5	9	2	20	2	0	0	0	26
14	Thomas, J.T.		1-3	0-1	0-0	0	2	2	1	2	2	0	0	0	24
21	Isom, Mareik		0-4	0-2	1-2	0	1	1	1	1	0	0	0	0	8
22	Reid, James		2-7	1-5	2-2	0	2	2	2	7	1	2	0	0	21
Team						1	0	1							
Totals			20-59	4-21	17-22	13	16	29	13	61	7	8	1	2	200
FG % 1st Half: 10-29 34.5%		2nd half: 10-30 33.3%		Game: 20-59 33.9%		Deadball Rebounds 2									
3FG % 1st Half: 3-10 30.0%		2nd half: 1-11 9.1%		Game: 4-21 19.0%											
FT % 1st Half: 4-6 66.7%		2nd half: 13-16 81.3%		Game: 17-22 77.3%											

Officials: Rick Hartzell, Kevin Mathis, Byron Evans
Technical fouls: ULM-None. UALR-None.
Attendance: 1676

Score by periods	1st	2nd	Total
ULM	37	40	77
UALR	27	34	61

Points	In Paint	Off T/O	2nd Chance	Fast Break	Bench
ULM	44	8	8	4	0
UALR	22	8	12	0	30

Last FG - ULM 2nd-01:07, UALR 2nd-00:24.
Largest lead - ULM by 21 2nd-00:49, UALR by 2 1st-17:26.
ULM led for 36:31. UALR led for 01:58. Game was tied for 01:31.

Score tied - 2 times.
Lead changed - 4 times.

The Last Time ULM Played GS...

ULM Falls to Georgia Southern 57-53; Vining Honored at Halftime

MONROE, La. — The ULM men's basketball program dropped a 57-53 decision to Georgia Southern to close out the weekend on Saturday at Fant-Ewing Coliseum.

Senior Tylor Ongwae posted a double-double with 17 points and a game-high 10 rebounds. Sophomore Nick Coppola also reached double-figures with 10 points.

The Warhawks (12-8, 6-3 SBC) were neck-and-neck with the Eagles (13-4, 6-2 SBC) the whole way, but couldn't overcome a cold shooting night from beyond-the-arc as they went 2-19 (.105).

Eric Ferguson led GS with a game-high 19 points. Jelani Hewitt pitched in with 15 points including a trio of three-pointers.

An early seven points from junior Majok Deng got ULM ahead, 14-8 in the first half. The Eagles came back with a 10-0 run to take an 18-14 lead, forcing a ULM timeout at the 7:48 mark.

ULM was still down 24-21 when it went on a 6-0 run, including a fast-break lay-up by junior Mack Foster, to go up 27-24 with 1:03 remaining. GS scored the final five points of the half, capped a three-pointer in the closing seconds by Ferguson, to take a 29-27 edge into the intermission.

The Warhawks trailed 38-35 in the second half when the Eagles made a jumper and three-pointer to go up 43-35 with 9:55 to go. A jumper by junior Jamaal Samuel and a big dunk by Ongwae forced GS to call timeout with a 43-39 lead at the 9:13 mark.

After the Eagles pushed their lead back up to nine, 52-43, ULM answered with lay-ups from Samuel, Williams and junior Justin Roberson to make it a 52-49 game with 3:31 left. GS was able to close it out with big baskets from Ferguson and Mike Hughes in the closing minutes.

Official Basketball Box Score -- Game Totals -- Final Statistics GEORGIA SOUTHERN vs ULM 01/24/15 4:30 PM CST at Fant-Ewing Coliseum; Monroe, Louisiana

GEORGIA SOUTHERN 57 • 13-4, 6-2

		Total		3-Ptr	Rebounds											
#	Player	FG-FGA	FG-FGA	FT-FTA	Off	Def	Tot	PF	TP	A	TO	Blk	Stl	Min		
02	Hughes, Mike	* 1-4	0-2	1-2	0	2	2	2	3	4	2	0	2	29		
05	Hewitt, Jelani	* 4-13	3-8	4-6	0	7	7	2	15	3	2	0	2	38		
10	Allsmiller, Jake	* 3-5	3-5	0-0	0	1	1	1	9	1	2	0	0	24		
13	Matias, Angel	* 1-4	0-0	0-0	1	1	2	1	2	1	0	1	2	21		
44	Wiedeman, Trent	* 3-6	0-0	0-0	1	2	3	1	6	0	1	2	1	29		
03	Ferguson, Eric	8-13	2-4	1-1	1	7	8	5	19	0	0	1	0	20		
04	Diamond, Curtis	1-4	1-3	0-1	0	2	2	1	3	3	1	1	0	28		
35	Doyle, Kyle	0-1	0-1	0-0	0	1	1	2	0	0	2	0	0	11		
Team					1	2	3									
Totals		21-50	9-23	6-10	4	25	29	15	57	12	10	5	7	200		

ULM 53 • 12-8, 6-3

#	Player	Total		3-Ptr	Rebounds			PF	TP	A TO Blk Stl				Min
		FG-FGA	FG-FGA		FT-FTA	Off	Def			Tot				
00	Williams, Marvin	* 1-4	0-0	0-1	1	0	1	2	2	2	3	0	1	35
04	Foster, Mack	* 3-6	0-3	0-2	0	2	2	6	2	2	2	0	0	27
11	Coppola, Nick	* 4-11	1-5	1-2	0	6	6	4	10	1	0	0	0	34
12	Ongwae, Tylor	* 4-13	0-3	9-10	2	8	10	2	17	0	1	0	1	37
13	Deng, Majok	* 2-3	1-2	2-2	4	3	7	2	7	0	2	2	0	29
02	Harvey, DeMondre	0-0	0-0	0-0	0	0	0	1	0	0	1	0	0	4
05	Samuel, Jamaal	3-7	0-1	0-0	1	1	2	1	6	1	0	1	0	9
22	Richard, Lance	0-2	0-2	0-0	0	1	1	0	0	0	0	0	0	4
32	Roberson, Justin	2-6	0-3	1-2	1	4	5	2	5	3	1	0	0	21
Team					1	3	4							
Totals		19-52	2-19	13-19	10	28	38	16	53	9	10	3	2	200

Officials: R-Rick Hartzell, U1-Joey Richardson, U2-Mick Fieldbinder
Technical fouls: GEORGIA SOUTHERN-None. ULM-None.
Attendance: 2898

Score by periods	1st	2nd	Total
GEORGIA SOUTHERN	29	28	57
ULM	27	26	53

Points	In Paint	Off T/O	2nd Chance	Fast Break	Bench
GS	22	9	0	0	22
ULM	30	11	11	4	11

Last FG - GS 2nd-00:32, ULM 2nd-00:44.
Largest lead - GS by 9 2nd-07:41, ULM by 6 1st-09:58.
GS led for 26:47. ULM led for 11:57. Game was tied for 01:16.

Score tied - 0 times.
Lead changed - 3 times.



ULM Warhawks Men's Basketball

University of Louisiana at Monroe



The Last Time ULM...

Scored 100 or more points
 Scored 90 or more points
 Scored 80 or more points
 Scored fewer than 40 points
 Held an opponent to under 50 points
 Held an opponent to under 40 points
 Won by 30 or more points
 Won by 40 or more points
 Won by 50 or more points
 Won by 60 or more points
 Had four double-digit scorers
 Had five double-digit scorers
 Had no double-digit scorers
 Had 20 or more assists
 Had fewer than 10 assists
 Had 10 or more blocks
 Had 10 or more steals
 Had 25 or more turnovers
 Had fewer than 10 turnovers
 Made 30 or more field goals
 Made 40 or more field goals
 Made 50 or more field goals
 Shot over 60 pct from field
 Shot less than 20 pct from field
 Made 10 or more 3-pointers
 Made 15 or more 3-pointers
 Shot over 50 pct from 3FG
 Shot over 60 pct from 3FG
 Shot less than 20 pct from 3FG
 Made 20 or more free throws
 Made 30 or more free throws
 Shot 80-90 pct free throws
 Shot over 90 pct free throws
 Won on a buzzer beater
 Lost on a buzzer beater
 Won on the last possession
 Lost on the last possession
 Won in overtime
 Won in double overtime
 Won in triple overtime
 Had two double-doubles in one game
 Had two 20+ scorers in one game

106, vs. Champion Baptist (11/17/14)
 106, vs. Champion Baptist (11/17/14)
 82, vs. Northwestern State (12/9/14)
 36, vs. Texas State (1/11/2014)
 39, vs. Champion Baptist (11/17/14)
 39, vs. Champion Baptist (11/17/14)
 67, vs. Champion Baptist (11/17/14)
 67, vs. Champion Baptist (11/17/14)
 67, vs. Champion Baptist (11/17/14)
 67, vs. Champion Baptist (11/17/14)
 4, at UALR (2/5/15)
 5, vs. UALR (1/17/15)
 at Georgia State (12/30/14)
 20, vs. Northwestern State (12/9/14)
 9, vs. Georgia Southern (1/24/15)
 10, vs. Champion Baptist (11/17/14)
 12, vs. Louisiana College (12/6/14)
 29, at Northwestern State (11/21/13)
 9, vs. South Alabama (1/31/15)
 30, at UALR (2/5/15)
 41, vs. Champion Baptist (11/17/14)
 51, vs. Georgia Southern (2/8/79)
 .620 (31-50), at Nicholls State (11/28/11)
 .185 (10-54) at No. 3 Ohio State (12/27/13)
 10, at UT Arlington (1/9/14)
 15, vs. Middle Tennessee (1/24/08)
 .600 (6-10), at Samford (12/21/14)
 .643 (9-14), at Troy (1/16/14)
 .105 (2-19), vs. Georgia Southern (1/24/15)
 24, vs. UL-Lafayette (1/4/14)
 30, vs. Troy (12/31/09)
 .833 (10-12), at Troy (1/29/15)
 .923 (12-13), at UALR (2/5/15)
 W, 60-58, vs. SFA (Malcolm Thomas Jumper) (11/25/08)
 L, 76-73, at La. Tech (Kyle Gibson 3FG) (12/2/09)
 W, 66-65, at UALR (Pair of defensive stands) (3/10/14)
 L, 65-64, vs. SFA (Zac Downing 3FG, 4 secs) (11/23/10)
 W, 58-55 (OT), at Troy (1/29/15)
 W, 103-98 (2OT), vs. UL-Lafayette (1/4/2014)
 W, 107-106 (3OT), at La. Tech (1/5/1970)
 Tylor Ongwae & Majok Deng (21 apiece), at UALR (2/5/15)
 Tylor Ongwae (25) & Amos Olatayo (20), at UT Arlington (1/9/2014)

A ULM Player...

Had a double-double (pts-rbs)
 Had a double-double (pts-asts)
 Had a triple-double
 Had 20 points or more
 Had 30 points or more
 Had 40 points or more
 Had 50 points or more
 Made 10 or more field goals
 Made 15 or more field goals
 Made five or more 3FG
 Made 10 or more FT
 Had 10 or more rebounds
 Had 15 or more rebounds
 Had 20 or more rebounds
 Had 25 or more rebounds
 Had 30 or more rebounds
 Had 10 or more assists
 Had 15 or more assists
 Had five or more steals
 Had 10 or more steals
 Had five or more blocks
 Had 10 or more blocks
 Played 40 minutes or more

Tylor Ongwae (16 pts, 13 rebs), vs. South Alabama (1/31/15)
 Nick Coppola (12 pts, 12 asts), vs. Louisiana College (12/6/14)
 Wojciech Myrda (11 pts, 10 rebs, 10 blks) vs. SHSU (1/24/02)
 Tylor Ongwae & Majok Deng (21 apiece), at UALR (2/5/15)
 Amos Olatayo (30), at Northwestern State (11/21/13)
 Henry Steele (40), vs. Louisiana College (1/23/71)
 Glynn Saulters (51), vs. Nicholls State (1/1/68)
 Tylor Ongwae (10), vs. Central Baptist (12/16/14)
 Mike Smith (15), vs. Houston (12/15/99)
 Trent Mackey (5), vs. North Texas (2/14/13)
 Tylor Ongwae (10-11), vs. South Alabama (1/31/15)
 Tylor Ongwae, (13), vs. South Alabama (1/31/15)
 Majok Deng (15), vs. UALR (1/17/15)
 DeAndre Alexander (20), vs. Lamar (3/2/05)
 Calvin Natt (25), vs. Miss. State (12/5/78)
 Calvin Natt (31) vs. Georgia Southern (12/29/76)
 Nick Coppola (12), vs. Louisiana College (12/6/14)
 Jayon James (15), at FIU (2/2/13)
 Tylor Ongwae (5), vs. UALR (2/15/14)
 Arthur Hayes (10), vs. McNeese State (1983)
 Jayon James (5), vs. UALR (2/15/14)
 Wojciech Myrda (13), vs. UTSA (3/2/02)
 Nick Coppola (40), at UALR (2/5/15)

MISCELLANEOUS STATS 2014-15

Largest halftime lead

35 (53-18), vs. Champion Baptist (11/17/14)

Largest halftime deficit

11 (37-26), vs. Robert Morris (11/27/14)

Largest halftime lead surrendered in a loss

3 (26-23), at Georgia State (12/30/14)

Largest halftime deficit overcome in a win

10 (31-21), at Troy (1/29/15)

Largest lead any time

67 (106-39), vs. Champion Baptist (11/17/14)

Largest deficit any time

20, (65-45) at Georgia State (12/30/14)

Largest lead surrendered in a loss

12, at No. 8 Florida (11/21/14)

Largest deficit overcome in a win

13, two times (at UTA/at Troy)

Most points scored in a half

53, vs. Champion Baptist (11/17/14)

Fewest points scored in a half

19, two times

Most points allowed in a half

44, two times (vs. NSU/LSUA)

Fewest points allowed in a half

18, two times (vs. Ch. Bapt/vs. USA)

Largest Rebounding Advantage

+27 (48-21), vs. Champion Baptist (11/17/14)

Largest Rebounding Disadvantage

-13 (49-36), at No. 8 Florida (11/21/14)

Highest Plus Turnover Differential

+13 (24-11), vs. Champion Baptist (11/17/14)

Highest Minus Turnover Differential

-11 (15-4), vs. NSU (12/9/14)

Most 3FG Made In a Game

9, three times

Most 3FG Allowed in a Game

10, vs. NSU (12/9/14)



ULM Warhawks Men's Basketball

University of Louisiana at Monroe



0 Marvin Williams

Senior | Center | 6-8 | 245
Memphis, Tenn. | NW Florida State College

	Season-High	Career-High
Pts	22, two times	22, two times
FG	9, two times	9, two times
3FG	1, at Florida (11/22/14)	1, two times
FT	6, at UTA (1/8/15)	6, at UTA (1/8/15)
Ast	2, vs. GaSo (1/24/15)	2, four times
Reb	13, at UTA (1/8/15)	13, two times
Blocks	3, two times	4, vs. UALR (2/15/14)
Steals	2, vs. CHBC (11/17/14)	2, vs. CHBC (11/17/14)
Min	36, vs. RMU (11/27/14)	36, vs. RMU (11/27/14)



2 DeMondre Harvey

Junior | Forward | 6-7 | 210
Memphis, Tenn. | NW Florida State College

	Season-High	Career-High
Pts	12, vs. NSU (12/9/14)	12, vs. NSU (12/9/14)
FG	6, vs. NSU (12/9/14)	6, vs. NSU (12/9/14)
3FG	N/A	N/A
FT	5, vs. LSUA (12/19/14)	5, vs. LSUA (12/19/14)
Ast	3, vs. ASU (1/5/15)	3, vs. ASU (1/5/15)
Reb	10, vs. NSU (12/9/14)	10, vs. NSU (12/9/14)
Blocks	3, vs. CHBC (11/17/14)	3, vs. CHBC (11/17/14)
Steals	1, four times	3, vs. ASU (3/1/14)
Min	30, two times	30, two times

Opp	GS	Min	FG-FGA/Pct.	3FG-FGA	FT-FTA/PCT	O-D-T	PF-FO	A	TO	Blk	Stl	Pts/Avg
UAB	*	16	1-5/.200	0-1/.000	1-1/1.000	0-0-0	3-0	0	0	0	1	3/3.0
CH BAP	*	18	3-3/1.000	0-0/.000	5-8/.625	1-3-4	2-0	1	1	0	2	11/7.0
Florida	*	27	3-11/.273	1-1/1.000	0-0/.000	3-1-4	2-0	0	1	2	0	7/7.0
C. Car	*	6	0-1/.000	0-1/.000	0-0/.000	0-2-2	4-0	0	2	0	0	0/5.3
RMU	*	36	6-11/.545	0-0/.000	2-5/.400	2-3-5	3-0	1	1	3	1	14/7.0
La. Col		10	1-1/1.000	0-0/.000	0-0/.000	0-3-3	1-0	0	1	0	0	2/6.2
NSU		9	1-1/1.000	0-0/.000	0-0/.000	0-2-2	2-0	0	2	1	0	2/5.6
N.M.	*	18	2-4/.500	0-0/.000	2-2/1.000	3-2-5	2-0	0	2	2	0	6/5.6
CE BAP					DNP							
LSU-A		22	4-7/.571	0-0/.000	2-6/.333	2-2-4	1-0	0	0	2	0	10/6.1
Samford		16	2-4/.500	0-0/.000	0-0/.000	2-2-4	4-0	1	1	0	0	4/5.9
Ga. St.		17	1-3/.333	0-0/.000	5-6/.833	2-4-6	2-0	1	3	0	0	7/6.0
Ark. St.	*	33	9-12/.750	0-0/.000	4-5/.800	3-4-7	1-0	1	2	0	0	22/7.3
UTA	*	32	8-12/.667	0-0/.000	6-6/1.000	6-7-13	2-0	0	2	2	0	22/8.5
TXST	*	31	9-9/1.000	0-0/.000	0-0/.000	3-3-6	2-0	1	5	0	0	18/9.1
Troy	*	24	4-7/.571	0-0/.000	0-0/.000	1-5-6	3-0	0	3	3	0	8/9.1
UALR	*	23	5-8/.625	0-0/.000	0-2/.000	1-3-4	5-1	0	2	1	0	10/9.1
UL-L	*	31	3-8/.375	0-0/.000	0-3/.000	3-4-7	4-0	0	2	1	2	6/8.9
UTA	*	28	6-6/1.000	0-0/.000	5-6/.833	2-6-8	0-0	0	0	1	1	17/9.4
Ga. So.	*	35	1-4/.250	0-0/.000	0-1/.000	1-0-1	2-0	2	3	0	1	2/9.0
Troy	*	19	2-5/.400	0-0/.000	0-0/.000	0-3-3	1-0	1	1	0	0	4/8.8
USA	*	23	2-7/.286	0-0/.000	0-0/.000	1-3-4	3-0	1	1	1	1	4/8.5
UALR					DNP							
Ga. So.												
UL-L												
App. St.												
Ark. St.												
USA												
App. St.												
Ga. St.												
TXST												
TBA												
Totals	16	474	73-129/.566	1-3/.333	32-51/.627	36-62-98	49-1	10	35	19	9	179/8.5

Opp	GS	Min	FG-FGA/Pct.	3FG-FGA	FT-FTA/PCT	O-D-T	PF-FO	A	TO	Blk	Stl	Pts/Avg
UAB		22	2-7/.286	0-0/.000	1-2/.500	3-2-5	0-0	0	1	0	0	5/5.0
CH BAP		21	2-3/.667	0-0/.000	2-3/.667	6-3-9	1-0	0	1	3	0	9/7.0
Florida		6	0-0/.000	0-0/.000	0-0/.000	0-0-0	1-0	0	0	0	0	0/4.7
C. Car		15	0-1/.000	0-0/.000	0-0/.000	1-0-1	1-0	0	0	0	0	0/3.5
RMU		1	0-0/.000	0-0/.000	0-0/.000	0-0-0	0-0	0	0	0	0	0/2.2
La. Col	*	30	4-7/.571	0-0/.000	0-0/.000	2-7-9	1-0	2	3	1	1	8/3.2
NSU	*	30	6-6/1.000	0-0/.000	0-0/.000	1-9-10	1-0	1	2	2	0	12/4.4
N.M.		10	0-0/.000	0-0/.000	0-0/.000	1-0-1	3-0	1	1	1	0	0/3.9
CE BAP		25	4-7/.571	0-0/.000	0-0/.000	4-4-8	3-0	0	0	0	0	8/4.3
LSU-A	*	16	1-1/1.000	0-0/.000	5-5/1.000	0-2-2	0-0	0	1	0	1	7/4.6
Samford	*	14	3-4/.750	0-0/.000	0-3/.000	2-1-3	1-0	0	0	0	0	6/4.7
Ga. St.	*	20	1-4/.250	0-0/.000	1-2/.500	2-2-4	1-0	0	0	0	0	3/4.6
Ark. St.		13	2-2/1.000	0-0/.000	0-1/.000	1-3-4	2-0	3	1	0	0	4/4.5
UTA		7	1-2/.500	0-0/.000	0-0/.000	0-1-1	1-0	0	1	0	1	2/4.4
TXST		9	0-1/.000	0-0/.000	0-0/.000	1-0-1	2-0	1	0	1	0	0/4.1
Troy		16	1-1/1.000	0-0/.000	0-0/.000	0-1-1	0-0	1	0	0	1	2/3.9
UALR		14	0-0/.000	0-0/.000	0-2/.000	0-0-0	2-0	0	0	0	0	0/3.7
UL-L		3	0-0/.000	0-0/.000	0-0/.000	0-0-0	1-0	0	0	0	0	0/3.5
UTA		5	0-0/.000	0-0/.000	4-5/.800	1-0-1	0-0	0	0	0	0	4/3.5
Ga. So.		4	0-0/.000	0-0/.000	0-0/.000	0-0-0	1-0	0	1	0	0	0/3.4
Troy		5	0-0/.000	0-0/.000	0-0/.000	1-3-4	0-0	0	0	0	0	0/3.2
USA		8	0-3/.000	0-0/.000	0-0/.000	2-1-3	0-0	0	0	0	0	0/3.0
UALR		4	0-0/.000	0-0/.000	0-0/.000	0-0-0	0-0	0	0	0	0	0/2.9
Ga. So.												
UL-L												
App. St.												
Ark. St.												
USA												
App. St.												
Ga. St.												
TXST												
TBA												
Totals	5	298	27-49/.551	0-0/.000	13-23/.565	28-39-67	22-0	9	12	8	4	67/2.9

2014-15 (SENIOR)

Posted game-highs of 17 points and eight rebounds vs. UTA... won SBC and Co-LSWA Player of the Week on Jan. 12 after leading the team to a 3-0 record and going 26-33 (.798) FG with 20.7 ppg and 8.7 rpg... came up huge with 18 points on 9-9 shooting at Texas State... matched career-highs of 22 points and 13 rebounds in a big 76-73 overtime win over UTA and had eight of ULM's nine points in overtime and was a perfect 6-6 from the free throw line... dominating career-high performance of 22 points and nine made field goals in the win over Arkansas State and also grabbed seven rebounds... put in 10 points in a win over UALR at home... registered 14 points, six field goals made and 36 minutes in the Battle 4 Atlantis against Robert Morris... grabbed a season-high six rebounds at Georgia State... tallied 11 points on a perfect 3-for-3 from the field, grabbed four rebounds and set a career-high two steals in a win over Champion Baptist... scored 10 points with four rebounds and a pair of blocks in a victory over LSU-A

2013-14 (JUNIOR)

Tallied a pair of double-doubles with 13 points and 10 rebounds at Northwestern State and 11 points and 13 rebounds at Arkansas State... led the team with 23 blocks, finishing top-10 in the SBC... averaged 8.5 points and 4.8 rebounds per game... shot 48.6 percent from the field (89-183) which was top-15 in the league... grabbed 2.1 offensive rebounds per game in conference play, eighth-best in the league... posted nine double-figure scoring games on the season including a career-high 19 points at No. 5 Kansas to outscore Preseason Player of the Year Andrew Wiggins... the 13 rebounds against the Red Wolves were the most by a Warhawk in a single-game on the season... turned in 14 points and nine rebounds against UT Arlington at the SBC Championships... rejected a career-high four blocks at home against UALR

2014-15 (JUNIOR)

Posted a career performance against Northwestern State with a double-double and personal bests of 12 points and 10 rebounds in the win; matched his career-high with 30 minutes after getting the start... also earned the start and logged 30 minutes against Louisiana College; recorded eight points and nine rebounds in the contest... big outing with nine points, nine rebounds and three blocks in the win over Champion Baptist

2013-14 (SOPHOMORE)

Led the team in field goal percentage with a .531 mark (34-64)... registered a career-high 11 points on four made field goals against Thomas... grabbed a career-high eight rebounds at both Ole Miss and UALR... played a career-high 25 minutes at home against WKU... career-high three steals at home against Troy... recorded 13 blocks and 13 steals on the season... made four starts and played in all 27 contests... averaged 3.1 points and 3.4 rebounds per game... led the team in rebounding in four games and in blocks in six games

PREVIOUS SCHOOL

Played at Pearl River Junior College in Poplarville, Miss. and averaged 6.4 points and 5.8 rebounds per game ... Played in all 25 games and made 15 starts ... Registered three double-doubles including 14 points and 11 rebounds in the final game of the season on March 8 ... Tallied a career-high 15 points and four blocks against Holmes Community College on Nov. 5 ... Shot 60.0 percent from the field on the season and 60.6 percent from the free throw line ... Will have three years of eligibility remaining at ULM



ULM Warhawks Men's Basketball

University of Louisiana at Monroe



3 Prince Cooper

Sophomore | Guard | 6-4 | 215
Freeport, Bahamas | Miami-Dade College

	Season-High	Career-High
Pts	3, vs. CHBC (11/17/14)	3, vs. CHBC (11/17/14)
FG	1, seven times	1, seven times
3FG	N/A	N/A
FT	1, vs. CHBC (11/17/14)	1, vs. CHBC (11/17/14)
Ast	3, vs. CHBC (11/17/14)	3, vs. CHBC (11/17/14)
Reb	5, vs. CHBC (11/17/14)	5, vs. CHBC (11/17/14)
Blocks	1, vs. CHBC (11/17/14)	1, vs. CHBC (11/17/14)
Steals	1, two times	1, two times
Min	24, vs. CHBC (11/17/14)	24, vs. CHBC (11/17/14)

Opp	GS	Min	FG-FGA/Pct.	3FG-FGA	FT-FTA/PCT	O-D-T	PF-FO	A	TO	Blk	Stl	Pts/Avg
UAB	5	0-1/.000	0-0/.000	0-0/.000	1-0-1	0-0	0	0	0	0	0	0/0.0
CH BAP	24	1-6/.167	0-0/.000	1-2/.500	2-3-5	1-0	3	2	1	1		3/1.5
Florida	6	1-2/.500	0-0/.000	0-0/.000	1-3-4	0-0	0	0	0	0		2/1.7
C. Car	12	1-1/1.000	0-0/.000	0-0/.000	0-2-2	0-0	1	1	0	0		2/1.8
RMU	8	0-0/.000	0-0/.000	0-0/.000	1-0-1	0-0	0	0	0	0		0/1.4
La. Col				DNP								
NSU				DNP								
N.M.	1	0-0/.000	0-0/.000	0-0/.000	0-0-0	0-0	0	0	0	0		0/1.2
CE BAP	7	0-1/.000	0-0/.000	0-2/.000	0-0-0	0-0	1	1	0	0		0/1.0
LSU-A				DNP								
Samford				DNP								
Ga. St.	18	1-2/.500	0-0/.000	0-2/.000	0-1-1	0-0	2	2	0	0	1	2/1.1
Ark. St.	4	1-1/1.000	0-0/.000	0-0/.000	1-0-1	0-0	0	0	0	0		2/1.2
UTA	8	1-1/1.000	0-0/.000	0-0/.000	0-1-1	2-0	0	0	0	0		2/1.3
TXST	5	1-1/1.000	0-0/.000	0-0/.000	0-2-2	0-0	1	0	0	0		2/1.4
Troy	5	0-0/.000	0-0/.000	0-0/.000	0-0-0	0-0	1	0	0	0		0/1.3
UALR				DNP								
UL-L	6	0-0/.000	0-0/.000	0-0/.000	0-0-0	0-0	0	0	0	0		0/1.2
UTA	2	0-0/.000	0-0/.000	0-2/.000	0-1-1	2-0	0	2	0	0		0/1.1
Ga. So.				DNP								
Troy				DNP								
USA				DNP								
UALR	1	0-0/.000	0-0/.000	0-0/.000	0-0-0	0-0	0	0	0	0		0/1.0
Ga. So.												
UL-L												
App. St.												
Ark. St.												
USA												
App. St.												
Ga. St.												
TXST												
TBA												
Totals	112	7-16/.438	0-0/.000	1-8/.125	6-13-.19	5-0	9	8	1	2		15/1.2

2014-15 (SOPHOMORE)

Set nearly every career high in a win against Champion Baptist including five rebounds and three assists in 24 minutes... hit a mid-range jumpers in conference against Georgia State, Arkansas State, UT Arlington and Texas State

PREVIOUS SCHOOL

Played one season at Miami-Dade JC (Fla.)... averaged 10.4 points, 6.4 rebounds and 2.1 assists per game... shot an astounding 83 percent from the field... earned Dean's List honors for his achievements in the classroom

HIGH SCHOOL

Lettered in both basketball and track & field at Piney Woods HS (Miss.)... averaged 12 points, eight rebounds and three assists per game... named team captain as a senior... state champion in the triple jump (track & field)... earned academic honor roll and the highest chemistry and algebra II award... graduated top-15 in his class



4 Mack Foster

Junior | Guard | 6-2 | 185
Beulah, Miss. | East Mississippi CC

	Season-High	Career-High
Pts	15, at Troy (1/29/15)	15, at Troy (1/29/15)
FG	5, two times	5, two times
3FG	3, three times	3, three times
FT	2, three times	2, three times
Ast	3, two times	3, two times
Reb	4, two times	4, two times
Blocks	1, four times	1, four times
Steals	4, vs. LC (12/6/14)	4, vs. LC (12/6/14)
Min	33, at Troy (1/29/15)	33, at Troy (1/29/15)

Opp	GS	Min	FG-FGA/Pct.	3FG-FGA	FT-FTA/PCT	O-D-T	PF-FO	A	TO	Blk	Stl	Pts/Avg
UAB	7	0-2/000	0-2/000	0-0/000	0-0-0	1-0	0	0	1	0	0	0/0.0
CH BAP	24	5-9/.556	3-6/.500	0-0/000	1-1-2	2-0	3	1	1	3	13/7.5	
Florida	18	1-4/.250	1-2/.500	0-0/000	0-0-0	4-0	2	0	0	3	3/5.3	
C. Car	11	3-4/.750	0-1/000	0-2/000	2-0-2	0-0	1	0	0	0	6/5.5	
RMU	14	3-4/.750	0-1/000	0-2/000	1-0-1	1-0	3	0	0	0	6/5.6	
La. Col	18	3-5/.600	0-0/000	2-2/1.000	0-1-1	2-0	2	0	0	4	8/6.0	
NSU	14	1-6/.167	0-1/000	0-0/000	0-0-0	1-0	1	1	0	0	2/5.4	
N.M.	18	2-4/.500	1-2/.500	0-0/000	2-1-3	0-0	1	1	0	0	5/5.4	
CE BAP	11	0-3/000	0-1/000	0-0/000	0-3-3	2-0	0	1	0	0	0/4.8	
LSU-A	12	2-3/.667	1-1/1.000	0-0/000	0-0-0	2-0	1	1	0	0	5/4.8	
Samford	13	0-2/000	0-1/000	0-0/000	0-1-1	2-0	1	0	1	0	0/4.5	
Ga. St.	14	2-5/.400	1-3/.333	2-2/1.000	0-1-1	0-0	1	0	0	0	7/4.6	
Ark. St. *	22	2-5/.400	0-2/000	0-0/000	0-2-2	1-0	0	1	0	1	4/4.5	
UTA *	28	4-9/.444	3-8/.375	0-1/000	0-4-4	5-1	2	1	0	0	11/5.0	
TXST *	29	1-7/.143	1-6/.167	0-0/000	0-1-1	2-0	1	1	0	0	3/4.9	
Troy *	21	2-7/.286	0-2/000	2-2/1.000	1-2-3	1-0	2	0	1	0	6/4.9	
UALR *	18	0-4/000	0-2/000	0-2/000	0-0-0	2-0	0	1	0	1	0/4.6	
UL-L *	14	2-9/.222	0-3/000	2-2/1.000	1-3-4	0-0	0	2	0	1	6/4.7	
UTA *	20	2-3/.667	1-2/.500	0-0/000	0-3-3	2-0	2	1	0	1	5/4.7	
Ga. So. *	27	3-6/.500	0-3/000	0-2/000	0-2-2	2-0	2	2	0	0	6/4.8	
Troy	33	5-10/.500	3-6/.500	2-2/1.000	1-3-4	1-0	1	0	0	1	15/5.3	
USA	20	1-3/.333	0-1/000	0-0/000	1-1-2	2-0	0	0	0	0	2/5.1	
UALR	16	0-0/000	0-0/000	0-0/000	0-3-3	2-0	0	2	0	0	0/4.9	
Ga. So.												
UL-L												
App. St.												
Ark. St.												
USA												
App. St.												
Ga. St.												
TXST												
TBA												
Totals	8	422	44-114/.386	15-56/.268	10-19/.526	10-32-.42	37-1	26	16	4	15	113/4.9

2014-15 (JUNIOR)

Drained a career-high 15 points and played a career-high 33 minutes in an overtime win at Troy.... earned eight consecutive starts including at UT Arlington where he netted 11 points after a trio of three-pointers... ULM went on a six-game winning streak with him starting... became the first Warhawk to register four steals in a game on the season in the win over Louisiana College... shot 3-for-4 from the field in both games of the Battle 4 Atlantis Mainland bracket against Coastal Carolina and Robert Morris... registered a career-high 13 points and hit a trio of three-pointers in 24 minutes in a win over Champion Baptist

PREVIOUS SCHOOL

Played two seasons at East Mississippi CC and led the team to the Region 23 championship... guided the team to a No. 11 ranking in the NJCAA National Poll... averaged 7.1 points, 4.0 rebounds and 1.0 steals per game... hit a career-high six three-pointers in a game

HIGH SCHOOL

Lettered in both basketball and track & field at West Bolivar HS... named Co-MVP All-State and Best Offensive Player... earned All-Area MVP, First-Team and Best Defensive Player... guided the Eagles to the state championship... averaged 15 points, six rebounds, three steals and two blocks per game... dunked on Johnny O'Bryant III, who was drafted by the Milwaukee Bucks, his freshman year off a put-back



ULM Warhawks Men's Basketball

University of Louisiana at Monroe



5 Jamaal Samuel

Junior | Forward | 6-9 | 205
New Orleans, La. | Illinois State

	Season-High	Career-High
Pts	18, vs. CHBC (11/17/14)	18, vs. CHBC (11/17/14)
FG	8, at UALR (2/5/15)	8, at UALR (2/5/15)
3FG	3, two times	3, two times
FT	4, vs. NSU (12/9/14)	4, vs. NSU (12/9/14)
Ast	2, two times	2, three times
Reb	7, vs. NSU (12/9/14)	8, vs. Bradley (2/15/14)
Blocks	4, vs. C. Carolina (11/26/14)	4, two times
Steals	2, two times	2, two times
Min	33, at UALR (2/5/15)	at UALR (2/5/15)

Opp	GS	Min	FG-FGA/Pct.	3FG-FGA	FT-FTA/PCT	O-D-T	PF-FO	A	TO	Blk	Stl	Pts/Avg
UAB		17	1-4/.250	1-3/.333	0-0/.000	0-2-2	3-0	2	2	0	1	3/3.0
CH BAP		20	7-12/.583	3-6/.500	1-2/.500	1-5-6	1-0	0	2	2	0	18/10.5
Florida		22	3-10/.300	3-10/.300	0-0/.000	1-5-6	3-0	0	1	0	1	9/10.0
C. Car		23	1-4/.250	1-4/.250	0-0/.000	0-2-2	2-0	1	1	4	1	3/8.3
RMU		14	1-5/.200	1-4/.250	1-2/.500	0-5-5	2-0	1	4	0	1	4/7.4
La. Col		11	1-6/.167	0-1/.000	0-0/.000	2-0-2	2-0	0	0	1	0	2/6.5
NSU		14	4-8/.500	0-0/.000	4-5/.800	3-4-7	3-0	0	0	3	0	12/7.3
N.M.		27	2-7/.286	0-4/.000	2-2/1.000	0-2-2	0-0	0	0	0	2	6/7.1
CE BAP	*	21	1-5/.200	0-1/.000	1-2/.500	0-2-2	2-0	0	2	2	2	3/6.7
LSU-A		21	4-6/.667	0-2/.000	0-0/.000	2-3-5	1-0	1	2	1	0	8/6.8
Samford		25	5-8/.625	2-2/1.000	1-2/.500	0-6-6	4-0	0	1	1	0	13/7.4
Ga. St.	*	26	4-12/.333	1-4/.250	0-1/.000	0-5-5	0-0	2	1	0	0	9/7.5
Ark. St.		13	2-7/.286	1-4/.250	0-0/.000	0-0-0	0-0	0	0	1	0	5/7.3
UTA		12	1-8/.125	1-5/.200	0-0/.000	0-4-4	0-0	0	0	0	0	3/7.0
TXST		6	1-3/.333	0-2/.000	0-0/.000	0-1-1	2-0	0	1	0	0	2/6.7
Troy		12	2-4/.500	0-2/.000	0-0/.000	2-3-5	3-0	0	1	0	0	4/6.5
UALR		7	0-1/.000	0-1/.000	0-0/.000	0-2-2	1-0	0	1	0	0	0/6.1
UL-L		18	3-5/.600	3-4/.750	0-0/.000	0-0-0	2-0	0	1	0	1	9/6.3
UTA		13	0-3/.000	0-2/.000	0-0/.000	0-3-3	0-0	0	1	2	0	0/5.9
Ga. So.		9	3-7/.429	0-1/.000	0-0/.000	1-1-2	1-0	1	0	1	0	6/6.0
Troy		13	1-3/.333	1-3/.333	0-0/.000	1-1-2	1-0	0	0	1	0	3/5.8
USA		9	2-3/.667	0-0/.000	0-0/.000	0-0-0	0-0	0	2	0	0	4/5.7
UALR	*	33	8-13/.615	0-1/.000	0-0/.000	1-5-6	5-1	0	1	1	1	16/6.2
Ga. So.												
UL-L												
App. St.												
Ark. St.												
USA												
App. St.												
Ga. St.												
TXST												
TBA												
Totals	3	386	57-144/.396	18-66/.273	10-16/.625	14-61-75	38-1	8	24	20	10	142/6.2

2014-15 (JUNIOR)

Drained 16 points on a career-high eight made field goals and also grabbed six rebounds at UALR... hit a trio of long-range shots at UL-Lafayette... netted 13 points including a pair of three-pointers and pulled down six rebounds against Samford... registered 12 points and grabbed a season-high seven rebounds in the win over NSU... set career highs in points (18), field goals made (7) and three-pointers made (3) in a win over Champion Baptist... earned the start against Central Baptist and had a pair of blocks and steals... led the team with nine points at Georgia State

2013-14 (SOPHOMORE) ILLINOIS STATE

Played in 26 games with one start... ranked second on the team and No. 5 in the Missouri Valley Conference with 0.9 blocks per game... netted four points with four rebounds and three blocks in the loss at Southern Illinois (March 1)... grabbed a career-best eight rebounds and scored four points in the win over Bradley (Feb. 15)... blocked a career-best four shots and collected six rebounds in the overtime loss at Evansville (Feb. 12)... netted nine points on 3-for-4 shooting in the loss at Loyola (Feb. 9)... scored a career-high 10 points on a career-best five field goals (5-for-5) in the win over Northern Iowa (Feb. 5)... made his first-career start and scored four points during a career-high 24 minutes in the win over Drake (Feb. 1)... registered the first two blocks of his career in the win over Chicago State (Dec. 4)... scored nine points on 4-for-6 shooting with five rebounds in the loss at No. 14 VCU (Nov. 8)

2012-13 (FRESHMAN) PRIOR TO ILLINOIS STATE

Helped guide South Plains College to a 22-8 overall record and an 11-5 mark in the Western Junior College Athletic Conference (WJCAC) as a freshman in 2012-13... shot 46.7 percent from the field



11 Nick Coppola

Sophomore | Guard | 5-11 | 195
Richmond, Va. | Benedictine Prep

	Season-High	Career-High
Pts	15, three times	16, at GSU (2/20/14)
FG	6, four times	6, five times
3FG	3, three times	4, at GSU (2/20/14)
FT	4, two times	5, at KU (11/8/13)
Ast	12, vs. LC (12/6/14)	12, vs. LC (12/6/14)
Reb	6, vs. GaSo (1/24/15)	6, two times
Blocks	N/A	N/A
Steals	3, two times	3, two times
Min	45, at Florida (11/21/14)	45, at Florida (11/21/14)

Opp	GS	Min	FG-FGA/Pct.	3FG-FGA	FT-FTA/PCT	O-D-T	PF-FO	A	TO	Blk	Stl	Pts/Avg
UAB	*	33	5-8/625	3-5/600	1-2/500	0-4-4	0-0	6	2	0	1	14/14.0
CH BAP	*	12	2-2/1.000	1-1/1.000	2-4/500	0-2-2	1-0	4	0	0	1	7/10.5
Florida	*	45	3-10/300	3-5/600	2-2/1.000	0-1-1	3-0	2	1	0	1	11/10.7
C. Car	*	37	2-9/222	1-5/200	0-0/000	0-1-1	2-0	7	0	0	0	5/9.3
RMU	*	39	2-8/250	2-6/333	0-0/000	1-2-3	2-0	2	2	0	1	6/8.6
La. Col	*	31	6-9/667	0-2/000	0-2/000	0-0-0	1-0	12	4	0	3	12/9.2
NSU	*	40	4-9/444	2-5/400	3-4/750	1-4-5	3-0	6	2	0	2	13/9.7
N.M.	*	29	2-8/250	1-4/250	4-4/1.000	0-2-2	5-1	0	1	0	0	9/9.6
CE BAP	*	28	4-5/800	2-3/667	2-2/1.000	0-1-1	3-0	2	2	0	2	12/9.9
LSU-A	*	40	5-11/455	1-4/250	2-3/667	0-3-3	1-0	6	1	0	0	13/10.2
Samford	*	37	6-12/500	3-4/750	0-0/000	1-1-2	2-0	2	3	0	0	15/10.6
Ga. St.	*	29	2-4/500	2-3/667	0-0/000	0-4-4	1-0	4	1	0	2	6/10.3
Ark. St.	*	40	1-5/200	0-1/000	1-2/500	0-4-4	2-0	6	1	0	0	3/9.7
UTA	*	42	2-9/222	0-5/000	2-5/400	0-2-2	2-0	7	3	0	1	6/9.4
TXST	*	34	1-5/200	1-3/333	0-0/000	0-4-4	2-0	4	5	0	0	3/9.0
Troy	*	33	1-5/200	1-4/250	0-0/000	0-2-2	1-0	2	3	0	0	3/8.6
UALR	*	40	6-11/545	1-4/250	2-2/1.000	0-2-2	0-0	5	2	0	2	15/9.0
UL-L	*	35	3-9/333	1-4/250	0-0/000	0-4-4	1-0	1	1	0	1	7/8.9
UTA	*	34	2-6/333	1-4/250	0-0/000	0-2-2	3-0	3	3	0	2	5/8.7
Ga. So.	*	34	4-11/364	1-5/200	1-2/500	0-6-6	4-0	1	0	0	0	10/8.8
Troy	*	36	2-10/200	1-7/143	1-2/500	0-3-3	2-0	2	0	0	1	6/8.6
USA	*	37	6-9/667	1-2/500	2-2/1.000	0-1-1	1-0	3	1	0	3	15/8.9
UALR	*	40	3-6/500	1-1/1.000	4-4/1.000	1-2-3	3-0	4	3	0	1	11/9.0
Ga. So.												
UL-L												
App. St.												
Ark. St.												
USA												
App. St.												
Ga. St.												
TXST												
TBA												
Totals	23	805	74-181/409	30-87/345	29-42/690	4-57-61	45-1	90	41	0	24	207/9.0

2013-14 College Sports Madness SBC Freshman of the Year

2014-15 (SOPHOMORE)

Has started at point guard in every game of his career... matched a season-high and led the team with 15 points against UALR at home... matched his season-high again against South Alabama... set his season-high with 15 points at Samford... recorded 13 points vs. LSU... tallied career-highs of 12 assists and three steals against Louisiana College and also had a double-double with 12 points... posted 12 points on four-for-five shooting against Central Baptist... registered 13 points in 40 minutes against NSU... dished out seven assists against Coastal Carolina at the Battle 4 Atlantis... netted 11 points on a trio of three-pointers, including one in the final seconds of regulation to send the game to overtime against No. 8 Florida, and played a career-high 45 minutes... registered 14 points, including a trio of three-pointers in the second half, to go along with his six assists in a win at UAB... led the team with nine points at New Mexico

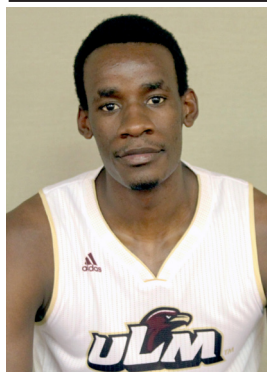
2013-14 (FRESHMAN)

One of two players to start all 27 games for the Warhawks... led the team in minutes with 33.3 per game... played 40 minutes nine times and tied the school record of five in a row set in 1999-2000 by Maurice Bell... in conference play, ranked third in the league in minutes (36.1 mpg), seventh in three-point field goal percentage (.407) and top-10 in assists (2.9 apg)... tallied nine double-figure scoring games including a career-high 16 points at Georgia State where he hit four three-pointers... drained a career-high six field goals at UALR in the regular season finale and scored 15 points... dished out a career-high eight assists in an overtime victory at Northwestern State... pulled down a career-high six rebounds at home versus WKU... scored 10 points in the season opener at No. 5 Kansas... led the team in minutes in 12 games and assists in 10 games... averaged 6.9 points and 3.3 assists per game on the year



ULM Warhawks Men's Basketball

University of Louisiana at Monroe



12 Tylor Ongwae

Senior | Forward | 6-7 | 205
Eldoret, Kenya | Ranger College

	Season-High	Career-High
Pts	25, vs. two times	27, two times
FG	10, two times	11, vs. ULL (1/4/14)
3FG	2, at UALR (2/5/15)	4, at UTA (1/9/14)
FT	10, vs. USA (1/31/15)	10, vs. USA (1/31/15)
Ast	9, vs. NSU (12/9/14)	9, vs. NSU (12/9/14)
Reb	13, vs. USA (1/31/15)	13, vs. USA (1/31/15)
Blocks	2, two times	3, vs. ULL (1/4/14)
Steals	4, at UALR (2/5/15)	5, vs. UALR (2/15/14)
Min	40, vs. UALR (1/17/15)	46, vs. ULL (1/4/14)



13 Major Deng

Junior | Forward | 6-10 | 190
Adelaide, Australia | Indian Hills CC

	Season-High	Career-High
Pts	21, at UALR (2/5/15)	21, at UALR (2/5/15)
FG	7, two times	7, two times
3FG	3, two times	3, two times
FT	6, vs. Troy (1/15/15)	6, vs. Troy (1/15/15)
Ast	3, vs. UTA (1/22/15)	3, vs. UTA (1/22/15)
Reb	15, vs. UALR (1/17/15)	15, vs. UALR (1/17/15)
Blocks	4, at UAB (11/15/14)	4, at UAB (11/15/14)
Steals	2, three times	2, three times
Min	40, at Troy (1/29/15)	40, at Troy (1/29/15)

Opp	GS	Min	FG-FGA/Pct.	3FG-FGA	FT-FTA/PCT	O-D-T	PF-FO	A	TO	Blk	Stl	Pts/Avg
UAB	*	34	8-17/.471	0-0/.000	2-2/1.000	3-6-9	5-1	2	3	0	1	18/18.0
CH BAP	*	12	8-10/.800	0-0/.000	0-0/.000	4-1-5	0-0	0	0	1	2	16/17.0
Florida	*	39	8-14/.585	0-1/.000	3-6/.625	3-5-8	4-0	3	3	2	0	19/17.7
C. Car	*	28	3-10/.300	0-3/.000	1-1/1.000	0-4-4	1-0	2	3	0	0	7/15.0
RMU	*	32	2-6/.333	0-0/.000	3-3/1.000	3-1-4	3-0	1	2	1	1	7/13.4
La. Col	*	30	9-15/.600	0-0/.000	4-5/.800	6-3-9	2-0	1	3	0	1	22/14.8
NSU	*	39	6-8/.750	0-0/.000	7-8/.875	2-8-10	3-0	9	4	0	0	19/15.4
N.M.	*	30	2-11/.182	1-3/.333	3-4/.750	2-5-7	3-0	1	2	0	0	8/14.5
CE BAP	*	38	10-16/.625	1-3/.333	4-4/1.000	2-3-5	2-0	6	1	0	1	25/15.7
LSU-A	*	38	9-15/.600	1-2/.500	6-6/1.000	2-4-6	3-0	4	2	0	1	25/16.6
Samford	*	39	2-14/.143	0-1/.000	5-6/.833	3-3-6	2-0	4	2	0	0	9/15.9
Ga. St.	*	22	0-7/.000	0-2/.000	0-0/.000	0-0-0	3-0	2	1	0	1	0/14.6
Ark. St.	*	36	4-7/.571	0-0/.000	2-2/1.000	1-6-7	0-0	1	3	2	1	10/14.2
UTA	*	29	2-7/.286	0-1/.000	3-3/1.000	2-4-6	5-1	5	1	0	1	7/13.7
TXST	*	35	4-10/.400	0-0/.000	9-9/1.000	3-5-8	1-0	2	1	1	2	17/13.9
Troy	*	35	7-15/.467	1-5/.200	0-1/.000	5-5-10	1-0	1	1	1	0	15/14.0
UALR	*	40	4-11/.364	0-2/.000	5-5/1.000	3-6-9	3-0	3	1	1	0	13/13.9
UL-L	*	34	5-11/.455	0-0/.000	3-5/.600	1-4-5	1-0	2	1	0	2	13/13.9
UTA	*	37	4-14/.286	1-4/.250	0-0/.000	2-6-8	4-0	2	4	0	1	9/13.6
Ga. So.	*	37	4-13/.308	0-3/.000	9-10/.900	2-8-10	2-0	0	1	0	1	17/13.8
Troy	*	35	3-12/.250	0-2/.000	0-0/.000	6-3-9	3-0	5	2	0	0	6/13.4
USA	*	38	3-13/.231	0-1/.000	10-11/.909	3-10-13	0-0	4	4	0	0	16/13.5
UALR	*	36	8-13/.615	2-5/.400	3-3/1.000	1-5-6	1-0	4	5	0	4	21/13.9
Ga. So.												
UL-L												
App. St.												
Ark. St.												
USA												
App. St.												
Ga. St.												
TXST												
TBA												

Totals 23 773 115-269/.428 7-38/.184 82-94/.872 59-105-164 52-2 64 50 9 20 319/13.9

2013-14 All-Conference Third-Team | 2013-14 NABC All-District Second-Team
2013-14 All-Louisiana Third-Team | 2013-14 College Sports Madness SBC Fourth-Team
2014-15 (SENIOR)

Posted 21 points, six rebounds, four steals and four assists at UALR... double-double with 16 points and a career-high 13 rebounds vs. USA... double-double with 17 points and 10 rebounds vs. Ga. Southern... team-high 13 points at UL-L... recorded 13 points and nine rebounds in 40 minutes vs. UALR... double-double with 15 points and 10 rebounds vs. Troy... scored 17 points on a perfect 9-9 FTs at TXST... season-high 25 points vs. Central Baptist... matched his season-high with 25 points against LSUA... double-double with 19 points and 10 rebounds vs. NSU and neared a triple-double with a career-high nine assists... neared a double-double with 22 points and nine rebounds vs. La. College... poured in 19 points and grabbed eight rebounds in an overtime thriller against No. 8 Florida and head coach Billy Donovan said he was the best player on the court... won SBC Player of the Week, College Sports Madness SBC Player of the Week and Warhawk of the Week on Nov. 18, 2014... drained 16 points in just 12 minutes on 8-for-10 shooting against Champion Baptist... netted 18 points in a victory over UAB and neared a double-double with nine rebounds

2013-14 (JUNIOR)

Became just the second ULM student-athlete in school history to earn All-Conference honors from the Sun Belt since joining the league in 2006-0... finished fourth in the league in scoring with 17.5 points per game and reached double-figures in 17 of 18 SBC contests... recorded double-digits in 24 of 27 games on the season and played at least 40 minutes three times... registered at least 20 points nine times... posted three double-doubles, with a career-high 27 points against both UL-L and Georgia State at home... led the team in scoring in 17 games... notched a career-high five steals at home vs. UALR, the most by a Warhawk in a single game on the season... played a career-high 46 minutes in the overtime win over UL-L and made a career-high 11 FGs... etched a team-high 20 points against UTA at the SBC Championships... one of two players to start all 27 games on the season... second on the team in rebounds (5.8 rpg), three-pointers made (27), blocks (19) and steals (30)... named to the NABC Honors Court for outstanding achievement in the classroom

Opp	GS	Min	FG-FGA/Pct.	3FG-FGA	FT-FTA/PCT	O-D-T	PF-FO	A	TO	Blk	Stl	Pts/Avg
UAB	*	25	5-9/.556	2-4/.500	1-2/.500	1-4-5	1-0	2	0	4	2	13/13.0
CH BAP	*	20	2-4/.500	0-2/.000	3-3/1.000	0-6-6	2-0	2	2	2	1	7/10.0
Florida	*	35	1-7/.143	1-5/.200	0-0/.000	1-8-9	2-0	1	1	0	0	3/7.7
C. Car	*	35	5-10/.500	2-6/.333	2-2/1.000	1-9-10	2-0	0	0	3	0	14/9.3
RMU	*	19	0-4/.000	0-2/.000	2-2/1.000	1-0-1	3-0	0	2	0	0	2/7.8
La. Col	*	29	5-9/.556	1-2/.500	3-6/.500	2-9-11	2-0	2	2	2	1	14/8.8
NSU	*	26	5-10/.500	1-1/1.000	3-4/.750	3-4-7	1-0	1	1	2	0	14/9.6
N.M.	*	26	3-8/.375	0-4/.000	0-0/.000	2-4-6	4-0	1	0	1	2	6/9.1
CE BAP	*	34	3-7/.429	0-0/.000	5-6/.833	4-7-11	2-0	2	3	3	1	11/9.3
LSU-A	*	21	1-2/.500	0-0/.000	0-0/.000	1-6-7	0-0	0	1	3	0	2/8.6
Samford	*	16	0-4/.000	0-1/.000	0-0/.000	0-3-3	1-0	0	0	1	0	0/7.8
Ga. St.	*	17	3-9/.333	0-2/.000	0-1/.000	4-4-8	1-0	1	1	1	0	6/7.7
Ark. St.	*	20	4-7/.571	0-2/.000	2-3/.667	1-5-6	4-0	2	3	0	1	10/7.8
UTA	*	34	6-9/.667	3-6/.500	0-0/.000	3-2-5	1-0	2	3	2	0	15/8.4
TXST	*	34	2-4/.500	2-4/.500	1-2/.500	2-6-8	2-0	2	2	3	2	7/8.3
Troy	*	28	4-10/.400	2-5/.400	6-6/1.000	1-5-6	0-0	2	0	1	1	16/8.8
UALR	*	34	4-6/.667	2-3/.667	4-8/.500	4-11-15	4-0	2	2	1	0	14/9.1
UL-L	*	28	3-7/.429	1-3/.333	1-2/.500	0-5-5	2-0	1	2	1	0	8/9.0
UTA	*	34	4-8/.500	2-5/.400	0-0/.000	0-2-2	1-0	3	1	2	1	10/9.1
Ga. So.	*	29	2-3/.667	1-2/.500	2-2/1.000	4-3-7	2-0	0	2	2	0	7/9.0
Troy	*	40	5-12/.417	3-6/.500	2-2/1.000	1-1-2	3-0	0	2	2	0	15/9.2
USA	*	31	7-12/.583	1-5/.200	2-2/1.000	1-7-8	4-0	0	0	2	0	17/9.6
UALR	*	29	7-10/.700	2-4/.500	5-6/.833	3-6-9	5-1	1	0	0	0	21/10.1
Ga. So.												
UL-L												
App. St.												
Ark. St.												
USA												
App. St.												
Ga. St.												
TXST												
TBA												

Totals 22 644 81-171/.474 26-74/.351 44-59/.746 40-117-157 49-1 27 30 38 12 232/10.1

JUNIOR (2014-15)

Career-high 21 points and also grabbed nine rebounds at UALR... etched 17 points on seven made field goals against South Alabama and also grabbed eight rebounds... registered 15 points in a career-high 40 minutes in an overtime win at Troy... grabbed a career-high 15 rebounds to go along with his 14 points and a double-double against UALR at home... netted 16 points and six free throws (6-6) vs. Troy... tallied 15 points on 6-9 shooting including a trio of three-pointers in an overtime win over UT Arlington... posted a double-double with 11 points and 11 rebounds in the win over Central Baptist... recorded 14 points, seven rebounds and two blocks and hit a big three-pointer in the end to defeat Northwestern State... tallied a double-double with 14 points and 11 rebounds in the win over Louisiana College... registered a double-double with 14 points and 10 rebounds against Coastal Carolina in the Battle 4 Atlantis... poured in 13 points, including a pair of three-pointers, in a win over UAB and also blocked four shots

PREVIOUS SCHOOL

Led Indian Hills Community College to the 2014 Regional and District Championships... guided the program to a 34-3 record in 2014 and a combined 60-7 record in his two years... hit a three-pointer against Southeastern for the win in double overtime in 2013... netted a career-high 16 points against John Wood CC



ULM Warhawks Men's Basketball

University of Louisiana at Monroe



20 Chinedu Amajoyi

Senior Guard | 6-3 | 195
Rancho Cucamonga, Calif. | Kilgore College

	Season-High	Career-High
Pts	8, vs. CHBC (11/17/14)	12, vs. USA (2/27/14)
FG	4, vs. CHBC (11/17/14)	4, vs. USA (2/27/14)
3FG	N/A	3, two times
FT	2, at GSU (12/30/14)	10, vs. ASU (1/30/14)
Ast	6, vs. CHBC (11/17/14)	6, vs. CHBC (11/17/14)
Reb	4, at UAB (11/15/14)	8, two times
Blocks	N/A	1, two times
Steals	1, at GSU (12/30/14)	2, two times
Min	19, two times	36, at ASU (3/6/14)

Opp	GS	Min	FG-FGA/Pct.	3FG-FGA	FT-FTA/PCT	O-D-T	PF-FO	A	TO	Blk	Stl	Pts/Avg
UAB		8	0-3/.000	0-1/.000	0-0/.000	1-3-4	1-0	1	2	0	0	0/0.0
CH BAP		19	4-7/.571	0-2/.000	0-0/.000	0-2-2	3-0	6	0	0	0	8/4.0
Florida					DNP							
C. Car		3	0-0/.000	0-0/.000	0-0/.000	0-0-0	0-0	0	1	0	0	0/2.7
RMU		1	0-0/.000	0-0/.000	0-0/.000	0-0-0	0-0	0	0	0	0	0/2.0
La. Col		10	0-1/.000	0-1/.000	0-0/.000	0-0-0	1-0	1	2	0	0	0/1.6
NSU					DNP							
N.M.		8	0-1/.000	0-0/.000	0-0/.000	0-1-1	0-0	1	1	0	0	0/1.3
CE BAP		2	0-2/.000	0-1/.000	0-0/.000	0-0-0	1-0	0	0	0	0	0/1.1
LSU-A					DNP							
Samford		13	0-1/.000	0-0/.000	0-0/.000	0-1-1	1-0	0	0	0	0	0/1.0
Ga. St.	*	19	0-0/.000	0-0/.000	2-2/1.000	0-0-0	0-0	1	1	0	1	2/1.1
Ark. St.					DNP							
UTA		4	0-1/.000	0-1/.000	0-0/.000	0-0-0	0-0	0	0	0	0	0/1.0
TXST					DNP							
Troy					DNP							
UALR					DNP							
UL-L		3	0-0/.000	0-0/.000	0-0/.000	0-0-0	0-0	1	0	0	0	0/0.9
UTA					DNP							
Ga. So.					DNP							
Troy		4	0-1/.000	0-1/.000	0-0/.000	0-0-0	0-0	1	0	0	0	0/0.8
USA		1	0-0/.000	0-0/.000	0-0/.000	0-0-0	0-0	0	0	0	0	0/0.8
UALR		1	0-0/.000	0-0/.000	0-0/.000	0-0-0	0-0	0	0	0	0	0/0.7
Ga. So.												
UL-L												
App. St.												
Ark. St.												
USA												
App. St.												
Ga. St.												
TXST												
TBA												
Totals	1	96	4-17/.235	0-7/.000	2-2/1.000	1-7-8	7-0	12	7	0	1	10/0.7

2014-15 (SENIOR)

Scored eight points in 19 minutes in a win over Champion Baptist

2013-14 (JUNIOR)

Finished top-10 in the league in three-point field goal percentage at .405 (15-37)... started in 11 of ULM's last 12 games and doubled his scoring average in that span... posted career-highs of 12 points and eight rebounds against South Alabama at home... became the only ULM student-athlete to hit 10 free throws in a game on the season as he went 10-12 at home against Arkansas State... registered three double-figure scoring games... played a career-high 36 minutes at Arkansas State and pulled down eight rebounds... drained a trio of three-pointers at both Texas State and Georgia State... averaged 4.1 points per game and made 22 appearances

PREVIOUS SCHOOL

Played two seasons at Kilgore College and led the Rangers to a 27-6 overall record and an East Texas JUCO Conference Championship ... Also guided Kilgore to the quarterfinals of the 2013 National Junior College Athletic Association National Tournament and started every game ... Averaged 5.9 points, 2.7 rebounds and 1.9 assists in 33 appearances ... Tallied five double-figure scoring games including a career-high 17 points on two separate occasions ... Shot .807 percent from the free-throw line

HIGH SCHOOL

An All-Conference honoree at Los Osos High School ... Averaged 15 points and seven rebounds per game while shooting .857 from the free throw line ... 1,000 point scorer in his career



22 Lance Richard

R-Freshman | Guard | 5-10 | 175
Monroe, La. | Sterlington HS

	Season-High	Career-High
Pts	8, vs. CHBC (11/17/14)	8, vs. CHBC (11/17/14)
FG	3, vs. CHBC (11/17/14)	3, vs. CHBC (11/17/14)
3FG	2, vs. CHBC (11/17/14)	2, vs. CHBC (11/17/14)
FT	N/A	N/A
Ast	N/A	N/A
Reb	3, vs. CHBC (11/17/14)	3, vs. CHBC (11/17/14)
Blocks	1, vs. RMU (11/17/14)	1, vs. RMU (11/17/14)
Steals	1, two times	1, two times
Min	15, vs. CHBC (11/17/14)	15, vs. CHBC (11/17/14)

Opp	GS	Min	FG-FGA/Pct.	3FG-FGA	FT-FTA/PCT	O-D-T	PF-FO	A	TO	Blk	Stl	Pts/Avg
UAB		1	0-0/.000	0-0/.000	0-0/.000	0-0-0	0-0	0	0	0	0	0/0.0
CH BAP		15	3-8/.375	2-7/.286	0-0/.000	0-3-3	1-0	0	1	0	1	8/4.0
Florida		1	0-0/.000	0-0/.000	0-0/.000	0-0-0	0-0	0	0	0	0	0/2.7
C. Car		1	0-2/.000	0-2/.000	0-0/.000	0-0-0	0-0	0	0	0	0	0/2.0
RMU		5	1-2/.500	1-2/.500	0-0/.000	0-0-0	2-0	0	0	1	0	3/2.2
La. Col		5	1-3/.333	1-3/.333	0-0/.000	0-0-0	0-0	0	0	0	0	3/2.3
NSU					DNP							
N.M.		1	0-1/.000	0-1/.000	0-0/.000	0-0-0	0-0	0	0	0	0	0/2.0
CE BAP		3	0-1/.000	0-1/.000	0-0/.000	0-0-0	0-0	0	0	0	1	0/1.8
LSU-A		0+	0-1/.000	0-1/.000	0-0/.000	0-0-0	0-0	0	0	0	0	0/1.6
Samford		2	0-0/.000	0-0/.000	0-0/.000	0-0-0	0-0	0	0	0	0	0/1.4
Ga. St.		5	1-2/.500	1-2/.500	0-0/.000	0-0-0	0-0	0	1	0	0	3/1.5
Ark. St.					DNP							
UTA		6	1-2/.500	1-2/.500	0-0/.000	0-1-1	1-0	0	0	0	0	3/1.7
TXST					DNP							
Troy					DNP							
UALR					DNP							
UL-L					DNP							
UTA					DNP							
Ga. So.		4	0-2/.000	0-2/.000	0-0/.000	0-1-1	0-0	0	0	0	0	0/1.5
Troy		0+	0-1/.000	0-0/.000	0-0/.000	1-0-1	0-0	0	0	0	0	0/1.4
USA					DNP							
UALR		1	0-0/.000	0-0/.000	0-0/.000	0-0-0	0-0	0	0	0	0	0/1.3
Ga. So.												
UL-L												
App. St.												
Ark. St.												
USA												
App. St.												
Ga. St.												
TXST												
TBA												
Totals		50	7-25/.280	6-23/.261	0-0/.000	1-5-6	4-0	0	2	1	2	20/1.3

2014-15 (SOPHOMORE)

Netted a career-high eight points and hit a pair of three-pointers in a win over Champion Baptist... hit a three-pointer in an overtime win over UT Arlington... drilled a three-pointer and also rejected a shot against Robert Morris at the Battle 4 Atlantis

2013-14 (FRESHMAN)

Redshirted... will still have four years of eligibility remaining

HIGH SCHOOL

Played three seasons at Sterlington High School ... Guided the Panthers to a 25-8 record as a senior and a second round appearance in the Louisiana High School Athletic Association playoffs ... Averaged 12 points and 3 assists per game his senior year ... Earned All-District honors from 2010-2013



ULM Warhawks Men's Basketball

University of Louisiana at Monroe



32 Justin Roberson

Junior | Guard | 6-1 | 185
Natchitoches, La. | Western Texas

	Season-High	Career-High
Pts	19, vs. CEBC (12/16/14)	19, vs. CEBC (12/16/14)
FG	8, vs. CEBC (12/16/14)	8, vs. CEBC (12/16/14)
3FG	1, five times	1, five times
FT	8, vs. UALR (1/17/15)	8, vs. UALR (1/17/15)
Ast	7, at UALR (2/5/15)	7, at UALR (2/5/15)
Reb	7, two times	7, two times
Blocks	2, vs. RMU (11/27/14)	2, vs. RMU (11/27/14)
Steals	4, at TXST (1/10/15)	4, at TXST (1/10/15)
Min	40, at Troy (1/29/15)	40, at Troy (1/29/15)

Opp	GS	Min	FG-FGA/Pct.	3FG-FGA	FT-FTA/PCT	O-D-T	PF-FO	A	TO	Blk	Stl	Pts/Avg
UAB	*	32	6-11/.545	0-0/.000	6-6/1.000	1-3-4	1-0	5	1	0	2	18/18.0
CH BAP	*	15	4-5/.800	0-0/.000	1-2/.500	0-1-1	1-0	2	1	0	3	9/13.5
Florida	*	26	1-6/.167	0-1/.000	0-0/..000	0-1-1	5-1	0	3	0	2	2/9.7
C. Car	*	29	4-7/.571	1-3/.333	2-2/1.000	0-7-7	2-0	2	2	0	0	11/10.0
RMU	*	31	6-10/.600	0-2/.000	0-0/.000	0-4-4	3-0	6	3	2	0	12/10.4
La. Col	*	26	5-7/.714	0-1/.000	2-2/1.000	0-3-3	4-0	1	5	0	2	12/10.7
NSU	*	28	4-6/.667	0-1/.000	0-2/.000	0-3-3	4-0	2	3	0	1	8/10.3
N.M.	*	32	3-11/.273	0-1/.000	0-1/.000	0-4-4	0-0	1	2	0	2	6/9.8
CE BAP	*	31	8-12/.667	1-2/.500	2-2/1.000	0-4-4	2-0	4	0	0	2	19/10.8
LSU-A	*	30	2-6/.333	0-0/.000	2-3/.667	0-7-7	5-1	4	2	0	0	6/10.3
Samford	*	25	1-10/.100	1-1/1.000	0-0/.000	3-3-6	0-0	2	3	0	1	3/9.6
Ga. St.		13	0-5/.000	0-1/.000	0-1/.000	0-0-0	2-0	0	0	0	0	0/8.8
Ark. St.		19	4-7/.571	0-0/.000	2-3/.667	0-1-1	2-0	1	0	0	0	10/8.9
UTA		23	2-10/.200	1-3/.333	0-0/.000	1-5-6	5-1	1	1	0	0	5/8.6
TXST		17	5-9/.556	0-1/.000	0-0/.000	0-2-2	5-1	2	3	0	4	10/8.7
Troy		26	4-9/.444	1-1/1.000	0-0/.000	0-1-1	1-0	0	0	0	1	9/8.8
UALR		24	2-6/.333	0-3/.000	8-9/.889	0-3-3	1-0	1	3	0	0	12/8.9
UL-L		28	3-7/.429	0-0/.000	2-5/.400	1-5-6	3-0	4	1	1	1	8/8.9
UTA		27	2-10/.200	0-1/.000	3-4/.750	3-2-5	2-0	3	3	0	0	7/8.8
Ga. So.		21	2-6/.333	0-3/.000	1-2/.500	1-4-5	2-0	3	1	0	0	5/8.6
Troy	*	40	2-11/.182	0-1/.000	5-6/.833	1-4-5	1-0	1	1	1	3	9/8.6
USA	*	33	4-11/.364	0-2/.000	1-1/1.000	1-3-4	5-1	6	1	1	2	9/8.6
UALR	*	39	4-10/.400	0-3/.000	0-0/.000	0-5-5	3-0	7	2	1	0	8/8.6
Ga. So.												
UL-L												
App. St.												
Ark. St.												
USA												
App. St.												
Ga. St.												
TXST												
TBA												
Totals	14	615	78-192/.406	5-31/.161	37-51/.725	12-75-87	59-5	58	41	6	26	198/8.6

JUNIOR (2014-15)

Dished out a career-high seven assists at UALR... put in 12 points and drained a career-high eight free throws (8-9) vs. UALR at home...scored 10 points against both Arkansas State and Texas State... career-high 19 points and eight made field goals in the win over Central Baptist... reached double-figures with 12 points on 5-7 shooting against Louisiana College... registered a team and game-high of 18 points, including a perfect 6-6 FT, to go along with his five assists in a win over UAB... recorded a career-high three steals against Champion Baptist... netted 11 points and grabbed a career-high seven rebounds against Coastal Carolina... drained 12 points with six assists and two blocks against Robert Morris

PREVIOUS SCHOOL

Led Western Texas Junior College to a 23-8 record and averaged 14.2 points, 3.5 rebounds, 4.0 assists and 2.0 steals per game... named to the All-Western Texas Conference First-Team... memorable dunk over a 6-8 post player after driving down the lane

HIGH SCHOOL

Lettered in both basketball and football at Natchitoches Central HS and earned All-State in both sports

Individual Career Totals for Returning Student-Athletes

Only includes statistics at ULM

Points

T. Ongwae	757
N. Coppola	393
M. Williams	392
D. Harvey	154
C. Amajoyi	101

Steals

T. Ongwae	50
N. Coppola	36
M. Williams	21
D. Harvey	17
C. Amajoyi	10

Field Goals M-A

T. Ongwae	267-630
M. Williams	162-312
N. Coppola	139-355
D. Harvey	61-113
C. Amajoyi	29-86

Free Throws M-A

T. Ongwae	200-234
M. Williams	66-108
N. Coppola	57-84
D. Harvey	29-50
C. Amajoyi	28-38

Rebounds

T. Ongwae	319
M. Williams	218
D. Harvey	160
N. Coppola	132
C. Amajoyi	75

Three-Pointers M-A

N. Coppola	56-161
T. Ongwae	34-138
C. Amajoyi	15-47
M. Williams	2-8

Assists

N. Coppola	178
T. Ongwae	103
D. Harvey	24
C. Amajoyi	23
M. Williams	19

Games/Starts

T. Ongwae	50/50
N. Coppola	50/50
D. Harvey	50/9
M. Williams	46/37
C. Amajoyi	36/15

Blocks

M. Williams	42
T. Ongwae	28
D. Harvey	21
C. Amajoyi	2

Minutes

N. Coppola	1704
T. Ongwae	1626
M. Williams	1064
D. Harvey	683
C. Amajoyi	477

ULM's 2014-15 Record When it Has...

Five Double-Figure Scorers (2-0)

vs. Northwestern State
vs. UALR

Two Double-Figure Scorers (2-6)

at No. 8 Florida
vs. Coastal Carolina
vs. Robert Morris
at Samford
vs. Troy (win)
vs. UT Arlington
vs. Georgia Southern
at Troy (win)

Four Double-Figure Scorers (6-0)

at UAB
vs. Champion Baptist
vs. Louisiana College
vs. Central Baptist
vs. Arkansas State
at UALR

One Double-Figure Scorer (1-0)

at UL-Lafayette

Three Double-Figure Scorers (4-0)

vs. LSU-Alexandria
at UT Arlington
at Texas State
vs. South Alabama

No Double-Figure Scorers (0-2)

at New Mexico
at Georgia State



ULM Warhawks Men's Basketball

University of Louisiana at Monroe

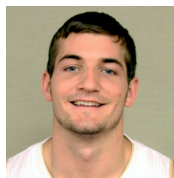


Media Roster



0 Marvin Williams

Senior | Center
6-8 | 245
Memphis, Tenn.
NW Florida State College



11 Nick Coppola

Sophomore | Guard
5-11 | 190
Richmond, Va.
Benedictine Prep



1 Alex Brown

Freshman | Guard
6-4 | 185
Vernon, Fla.
Vernon HS



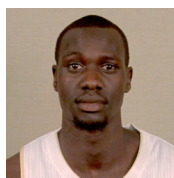
12 Tylor Ongwae

Senior | Forward
6-7 | 205
Eldoret, Kenya
Ranger College



2 DeMondre Harvey

Sophomore | Forward
6-7 | 210
Minden, La.
Pearl River CC



13 Majok Deng

Junior | Forward
6-10 | 190
Adelaide, Australia
Indian Hills CC



3 Prince Cooper

Sophomore | Guard
6-4 | 215
Freeport, Bahamas
Miami-Dade College



20 Chinedu Amajoyi

Senior | Guard
6-3 | 195
Rancho Cucamonga, Calif.
Kilgore College



4 Mack Foster

Junior | Guard
6-2 | 185
Beulah, Miss.
East Mississippi CC



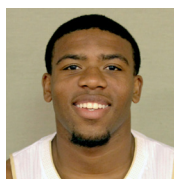
22 Lance Richard

R-Freshman | Guard
5-10 | 170
Monroe, La.
Sterlington HS



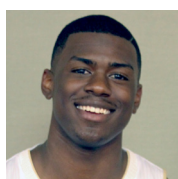
5 Jamaal Samuel

Junior | Forward
6-9 | 205
New Orleans, La.
Illinois State



32 Justin Roberson

Junior | Guard
6-1 | 185
Natchitoches, La.
Western Texas



10 Roderick Taylor

Freshman | Forward
6-8 | 210
Harker Heights, Texas
Harker Heights HS



Head Coach Keith Richard

ULM '82
Fifth Year at ULM
14th Year Overall
Baton Rouge, La.